

# AGENDA ITEM No. 17

Liz Pinchen

---

**From:** Fitch Emma <Emma.Fitch@cambridgeshire.gov.uk>  
**Sent:** 15 August 2014 10:34  
**To:** Fitch Emma  
**Cc:** Onslow John; Blackburne-Maze Tom; Smith Adam; Haymes Donald; Pratt Maggie; Taylorson Tony  
**Subject:** Cambridgeshire County Council Household Recycling Service Consultation - South Cambs Parish Council notification

Dear Parish Council,

Please accept this email as confirmation that Cambridgeshire County Council's consultation on the Household Recycling Service has started today (Friday 15 August) and will run for a six-week period until Friday 26 September. During this period we are encouraging residents to complete our online questionnaire which can be found at <http://www.cambridgeshire.gov.uk/recyclingcentreservice>.

This online consultation focuses on residents' current use of the service and their thoughts on the options being considered - which range from closing sites; transferring them to charitable or voluntary organisations; reduction in hours and days of operation across all sites; charging for certain DIY waste streams; and limiting the use of sites to larger vehicles to deter trade waste use. This online consultation will run alongside surveys being undertaken by AmeyCespa on our behalf at all of the nine household recycling centres (HRCs) within Cambridgeshire (Alconbury, Bluntisham, Milton, March, St Neots, Thriplow, Whittlesey, Wisbech and Witchford) to ensure users of the service can have their say.

We are making use of the RECAP and Shape your Place websites to help signpost residents to this consultation, as well as putting posters up at the nine HRCs and at all our public libraries, alongside taking advantage of Twitter and Facebook. We are also emailing yourself as an online Parish Council contact to ask you to let your residents know about the options being considered and the timescales of the consultation. Cambridgeshire County Council's Highways and Community Infrastructure Committee will be assessing the feedback and making a decision in the autumn.

I hope that you will find this notification useful. However, should you require any further information in relation to this consultation please do not hesitate to contact me on (01223) 715531 or [emma.fitch@cambridgeshire.gov.uk](mailto:emma.fitch@cambridgeshire.gov.uk).

Kind regards

Emma

**Emma Fitch (Miss)**  
Strategic Projects Manager (Waste)  
Assets and Commissioning  
Infrastructure Management Operations  
Economy, Transport & Environment  
Cambridgeshire County Council  
CC1305, Shire Hall, Castle Street  
Cambridge, CB3 0AP  
Tel: 01223 715531

## Consultation on suggested changes to Cambridgeshire's Household Recycling Service



- Section A: Why changes are being suggested
- Section B: Options being considered
- Section C: Why we are asking for your views
- Section D: How to give us feedback
- Section E: Questionnaire

## Section A: Why changes are being suggested to Cambridgeshire's Household Recycling Service

Over recent years, Cambridgeshire County Council has sought to find savings through cuts and redundancies to our 'back office' functions while protecting frontline services. However, owing to further reductions in national funding and increasing demand of key services such as adult social care, protecting children and looking after roads and transport, a further £149.1 million must be saved over the next five years. It's not going to be easy to balance the books over the new few years and difficult decisions are needed.

The Household Recycling Service options are part of the county council's plans to make sure that every service delivers maximum value for money. We recognise that any service change will have an impact on our residents. However, the options being considered seek to create a more efficient and effective service within the current financial restraints.

There are currently 9 household recycling centres (HRCs) in Cambridgeshire. These are situated at Alconbury, Bluntisham, March, Milton, St Neots, Thriplow, Whittlesey, Wisbech and Witchford. More information on the HRCs can be found using the following link: <http://tinyurl.com/ofwt5x>

## Section B: The options being considered

The options being considered fall into 6 broad categories identified below, although it is important to remember that **no one option** is likely to be a solution on its own:

1. Close up to 3 existing sites within Cambridgeshire on a permanent basis (locations of which to be confirmed)
2. Transfer up to 3 existing sites within Cambridgeshire to a community facility to be managed by a third sector operator e.g. a charitable organisation
3. Keep the existing 9 Cambridgeshire Household Recycling sites but close each of them for 2 weekdays ensuring the next closest is open as an alternative
4. Keep the existing 9 Cambridgeshire Household Recycling sites but reduce the hours in the week across all the sites
5. Charge for waste streams such as soil, hardcore, plasterboard etc. based on the size of the vehicle (amounts to be confirmed)
6. Implement a permit scheme to limit larger vehicles and trailers etc. to 12 visits per year to avoid tax payers potentially paying for trade waste at our sites

The above range of options for contributing to the required £149.1 million savings required by the Council have been based on how our sites are currently used, taking account of the experiences we have had in making similar changes.

## Section C: Why we are asking for your views

We want to gain a better understanding of how residents currently use the service and gauge what you think about the options being suggested. Your feedback will be considered before any decisions are made. This is your chance to let us know your views.

We also want to let residents know why changes are being suggested. The financial pressures local authorities are facing mean that we need to make huge savings and these proposals reflect that. The range of options aim to ensure that we have reviewed our service to deliver better value for money while maintaining a reliable service; and that the impact on Cambridgeshire's residents as a whole, taking account of the new communities being planned, is minimised.

## Section D: How to give us feedback

The best way to provide us with your feedback is by completing the online form on our website: <https://www.snapsurveys.com/wh/s.asp?k=140689909521>

If you don't have access to the internet, you can:

- Visit your local library where free internet access is available
- Phone us on 01223 715459 to request a paper form and return it using the freepost address at the bottom of the questionnaire

If you need help to understand the information in this document or have a question about our household waste recycling service, please contact us. You can contact us by:

- Email: [assetsandcommissioning@cambridgeshire.gov.uk](mailto:assetsandcommissioning@cambridgeshire.gov.uk)
- Phone: 01223 715459

**Please ensure that your response is received by midnight on 26 September 2014**

### **How and when will a decision be made?**

The consultation ends on 26 September 2014. A report setting out the options and details of the feedback we have received during the consultation will be presented to the Highways and Community Infrastructure Committee in the autumn. The Highways and Community Infrastructure Committee is made up of 17 elected members of the council across all parties. The Committee members will decide whether or not to proceed with the options and make a decision on the changes to be made.

### **Do you have any frequently asked questions sheets to help inform my response?**

A list of frequently asked questions (FAQs) have been prepared to help answer some of the expected questions. To see the FAQs document please visit the main consultation page at <http://www.cambridgeshire.gov.uk/recyclingcentreservice>

## Section E: Questionnaire

A paper copy of the questionnaire is available to download at <http://www.cambridgeshire.gov.uk/recyclingcentreservice>

# Household Recycling Service Review

## Frequently Asked Questions (FAQs)

- **When does the public consultation start and finish?**

Friday 15 August to midnight on Friday 26 September 2014

- **Why are changes being proposed and are they necessary?**

The Household Recycling Service Review is looking at how to provide an efficient and cost effective recycling service coupled with the need to help meet the County Council's savings target of £149 million over the next five years, which is essential to the delivery of Council services in the future.

- **What difference will my views make to the final decisions and have any decisions already been made?**

No decisions have been made on the options. All feedback received will be analysed and presented in a report to our Highways and Community Infrastructure Committee in the autumn. This Committee is made up of 17 cross-party elected Members of the council, who will take this information into account before making any decisions.

- **When will a final decision be made and will there be any further consultation?**

A decision will be made by the Highways and Community Infrastructure Committee in the autumn. The operational changes proposed will be given to AmeyCespa for communication with their staff. The implications from changes will also be communicated to the public to give residents a chance to prepare for any alternative arrangements they may need to make.

- **If changes are approved by Cambridgeshire County Council in the autumn when would the changes be implemented?**

If the Highways and Community Infrastructure Committee make a decision in the autumn which identifies the changes to be made, AmeyCespa will need a three month period to consult with their staff and get ready to implement the changes. A lot of work is being done by AmeyCespa and the County Council to ensure that there is a smooth transition to the new service and that these are delivered as close to the start of the new financial year in April as possible.



- **Why doesn't the consultation highlight what specific changes and site changes are proposed at this stage?**

The purpose of the consultation is to collect further information on how residents currently use the service and also gauge public opinion on all the options being considered. The Highways and Community Infrastructure Committee did not want to limit the options at this stage or single out individual household recycling centres (HRCs) to ensure that all possibilities were considered.

- **Why are there so many options to choose from?**

There are a wide range of options being considered as no one option will be a solution. Indeed it is most likely that a mix and match of options will need to be considered. As such the Highways and Community Infrastructure Committee wanted to ensure that as broad a range of options that were capable of delivering the savings were considered. These fall within 6 main themes which have been captured in both the online survey and the HRC survey taking place at each of the 9 HRCs in Cambridgeshire.

- **Will these changes lead to a reduction in recycling and an increase in the amount of waste sent to landfill?**

It is not anticipated that the options being considered will lead to a significant drop in the level of recycling at the HRCs and thereby an increase in landfill. However, we will work closely with AmeyCespa and our RECAP (Recycling Cambridgeshire and Peterborough) partners to encourage residents to use the household recycling service going forward and continue to recycle and reduce the waste we produce. Cambridgeshire residents are already well informed about the benefits of re-use and recycling so we will continue to spread this message.

- **Have you considered the possibility of flytipping in relation to the proposed changes?**

Yes. All of the options being considered have been assessed for the possibility of flytipping and any cost savings will take this into account to assess any 'cost shunting' implications to the City / District Councils. However, it is worth pointing out that whilst flytipping is a common concern there is little evidence to support the view that closing recycling centres or changing hours / days has an impact on flytipping in the local area. Other local authorities who have made similar changes have found no increase in flytipping such as Hertfordshire, Suffolk and Lincolnshire when asked.

- **Has the housing growth anticipated in Cambridgeshire been taken into account when looking at the options?**

Yes. The options being considered are linked into the overarching 'Household Recycling Service Strategy 2014 – 2019' document that was approved by Cabinet in April 2014. This document takes into account the anticipated population growth for Cambridgeshire to 2031 which is linked into the anticipated increase in waste arisings. This document can be viewed on our recycling centre page on our website using the following link: <http://tinyurl.com/ofwty5x>

- **Have these changes taken into account the wider waste collection service and the changes City / District Councils are looking to make with their waste collection services?**

Yes. We have discussed the options with our RECAP (Recycling Cambridgeshire and Peterborough) partners to ensure the whole service and any potential implications such as flytipping are considered as part of the wider public purse, rather than just as the waste disposal authority. This includes some of the changes they are considering in relation to the routes and changes to collection regimes.

- **Where are the existing 9 Household Recycling Centre (HRC) sites?**

There are currently 9 HRCs within Cambridgeshire at Alconbury, Bluntisham, March, Milton, St Neots, Thriplow, Whittlesey, Wisbech and Witchford. These are shown in the map overleaf, which includes some of the nearest HRCs across the border in neighbouring authorities. More information on these HRCs can be found by going to <http://tinyurl.com/ofwty5x>.

- **How much waste does each site receive?**

Table 1 below shows the total amount of waste received at each of our 9 HRCs from April 2013 to March 2014:

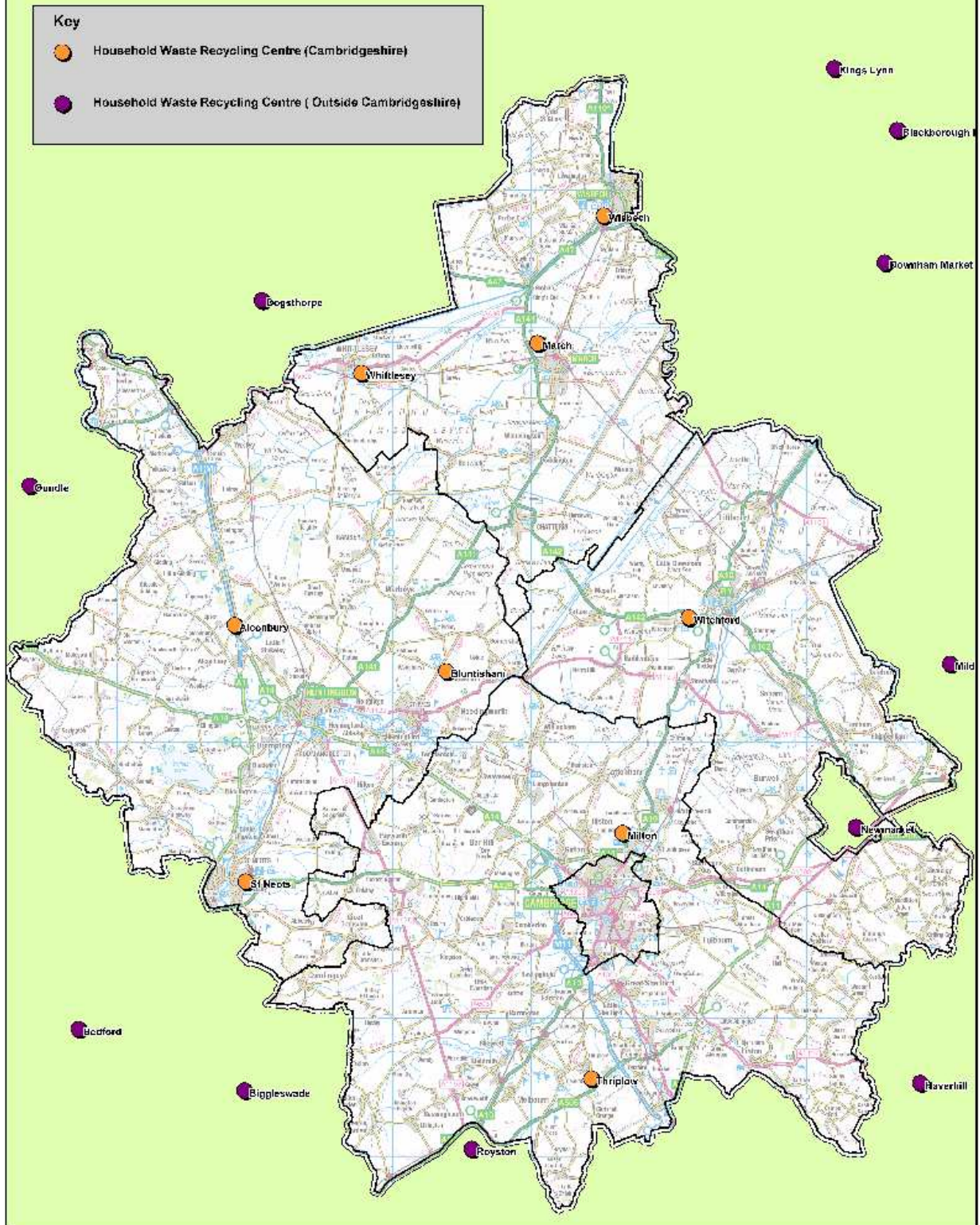
**Table 1: Total waste received at Household Recycling Sites, 2013/14**

<b>SITE</b>	<b>Total Waste Received (tonnes)</b>
Alconbury	<b>5,769</b>
Bluntisham	<b>8,345</b>
March	<b>4,730</b>
Milton	<b>12,192</b>
St Neots	<b>8,534</b>
Thriplow	<b>4,654</b>
Whittlesey	<b>3,201</b>
Wisbech	<b>7,100</b>
Witchford	<b>7,941</b>

- **Do you know how many people use each site and how has this been calculated?**

Historically we have used tonnages of sites to compare the use of the HRCs. However in 2014 we have placed 'traffic counters' at each of our sites to record numbers of vehicle movements. This new data is being analysed alongside tonnages to correlate the use of the existing HRCs. The traffic counters will provide data on hourly usage throughout the day and usage on different days of the week. This information will be analysed and presented as part of the Highways and Community Infrastructure Committee Report in the autumn to allow the maximum amount of full month data to be used to help inform Members decisions.

## Household Waste Recycling Centres in Cambridgeshire



Based upon Ordnance Survey material with the Permission of the Controller of Her Majesty's Stationery Office. Copy Right. Unauthorised reproduction in any form is prohibited and may lead to prosecution. Cambridgeshire County Council 10032616 2/13



**Note this is not to scale; it is for illustrative purposes only**



- **How much does it cost to run a HRC?**

The operating costs of our HRCs range from £145,000 to £240,000. These costs include operation, supervision, management, equipment, business rates, waste permits, and all bills and maintenance. They exclude the costs of recycling / reprocessing, disposal and haulage.

- **How far will I have to travel if changes are made to the service?**

As part of the overarching 'Household Recycling Service Strategy 2014 – 2019' document that was approved by Cabinet in April 2014, maps were created that looked at the journey times to existing HRCs which took account of sites outside of Cambridgeshire. These maps were produced using the 20 minute drive time guidance produced by WRAP (Waste and Resources Action Programme). These maps highlight some of the overlaps that we have in the existing service. Whilst this is not a statutory requirement, Cambridgeshire County Council are looking to ensure that we have the right facilities in the right places to best serve the needs of its residents. Whilst a specific distance cannot be identified until the decisions on the options have been made, an equitable approach to the service across Cambridgeshire, allowing for some of the overlaps identified within these drive time maps, will be taken into account. The maps produced within Appendix 1 of the overarching strategy document can be viewed on our recycling centre page on our website using the following link: <http://tinyurl.com/ofwty5x>

- **Would the HRC service still be available on Bank Holidays in the future?**

Yes, the service would still be available on Bank Holidays, with the exception of Christmas Day, Boxing Day and New Year's Day, which is the case already. The service is also likely to close early on Christmas Eve.

# Household Recycling Service Options: Public Consultation

We want to hear your views on suggested service changes to our household recycling service. This is your opportunity to tell us what you think so this can be taken into account before any decisions are made.

The review will look at how to provide an efficient and cost effective recycling service coupled with the need to help meet the County Council's savings target of £149 million over the next five years.

The options being considered include looking at the location, usage and potential closure of some household recycling centres (HRCs) in the county as well as proposals such as charging for certain waste streams such as hardcore and plasterboard, or reducing weekday opening hours at sites.

The challenge we face is to deliver the savings we need without impacting on our recycling rates across the County. No one option on its own will deliver the savings required, so it is essential that all the options are considered to ensure that the County Council can deliver the service going forward in this difficult financial climate.

**Please complete the following survey to let us know your views by 26 September 2014.**

This survey should not take more than 5-10 minutes to complete.

If you would like a copy of this document either in paper format, on audio cassette, Braille, large print or in other languages please contact us:

E-mail: [assetsandcommissioning@cambridgeshire.gov.uk](mailto:assetsandcommissioning@cambridgeshire.gov.uk)

Tel: 01223 715459

Address: Assets and Commissioning, Cambridgeshire County Council

Shire Hall CC1305, Castle Hill

FREEPOST CB176

Cambridge CB3 0BR

All information you provide will be treated in confidence and not shared with any third parties.

**Please click "next" below to begin the survey.**

## Recycling Centre use

What is your postcode? *(this will be used to identify common concerns by location, not to identify you personally)*

Approximately how often do you visit a household recycling centre?

- Weekly or more often                       Once every three months                       Less often than 12 months  
 Every two weeks                               Once every six months                               Only when moving  
 Once a month                                       Every 6 to 12 months                               Other - please specify

What items do you normally take to a household recycling centre? *Please tick all that apply*

- |  |  |   |   |
|--|--|---|---|
| <input type="checkbox"/> Paint                 | <input type="checkbox"/> Electrical items (TV, video, Hi-Fi) | <input type="checkbox"/> Glass bottles and jars | <input type="checkbox"/> White goods (washing machine, tumble drier...) |
| <input type="checkbox"/> Batteries (household) | <input type="checkbox"/> Engine oil/ oil                     | <input type="checkbox"/> Paper                  | <input type="checkbox"/> Chemicals (hazardous household waste)          |
| <input type="checkbox"/> Batteries (car)       | <input type="checkbox"/> Fluorescent tube/other light bulbs  | <input type="checkbox"/> Plastic                | <input type="checkbox"/> Wood/ timber (excl. furniture)                 |
| <input type="checkbox"/> Books                 | <input type="checkbox"/> Fridge/freezers                     | <input type="checkbox"/> Soil                   | <input type="checkbox"/> General household rubbish                      |
| <input type="checkbox"/> Bric a Brac           | <input type="checkbox"/> Furniture                           | <input type="checkbox"/> Building rubble        | <input type="checkbox"/> Other - please specify:                        |
| <input type="checkbox"/> Cans and tins         | <input type="checkbox"/> Garden Waste                        | <input type="checkbox"/> Scrap metal            |   |
| <input type="checkbox"/> Cardboard             | <input type="checkbox"/> Gas (LPG) canisters                 | <input type="checkbox"/> Shoes/textiles         |   |
| <input type="checkbox"/> Clothes               |  |   |   |

Where do you normally get your information about the recycling centre services?

- AmeyCespa Website                       Local Council Website                       RECAP Website                       Local Newspaper  
 County Council Website                       District Council Website                       Call contact centre                       Other - Please specify:

## Primary site use

Which site do you normally use?

- |                                  |                                |                                  |   |
|----------------------------------|--------------------------------|----------------------------------|---|
| <input type="radio"/> Alconbury  | <input type="radio"/> Milton   | <input type="radio"/> Whittlesey | <input type="radio"/> Other - please state: |
| <input type="radio"/> Bluntisham | <input type="radio"/> St Neots | <input type="radio"/> Wisbech    |   |
| <input type="radio"/> March      | <input type="radio"/> Thriplow | <input type="radio"/> Witchford  |   |

What type of vehicle do you normally use to visit the site chosen above?

- |                                 |  |   |  |
|---------------------------------|--|---|--|
| <input type="radio"/> Bicycle   | <input type="radio"/> MPV/Campervan                  | <input type="radio"/> Large Van e.g. long wheelbase | <input type="radio"/> Other - please state |
| <input type="radio"/> Motorbike | <input type="radio"/> Small Van e.g. short wheelbase | <input type="radio"/> Vehicle with trailer          |  |
| <input type="radio"/> Car       |  |   |  |

Why do you normally visit the site chosen above?

- |                                     |  |  |   |
|-------------------------------------|--|--|---|
| <input type="radio"/> Close to home | <input type="radio"/> En-route to somewhere else | <input type="radio"/> Because it is a free service | <input type="radio"/> Other - please state: |
|-------------------------------------|--|--|---|

What day of the week do you normally visit this site?

- |                               |                                 |                                |                              |
|-------------------------------|---------------------------------|--------------------------------|------------------------------|
| <input type="radio"/> Monday  | <input type="radio"/> Wednesday | <input type="radio"/> Friday   | <input type="radio"/> Sunday |
| <input type="radio"/> Tuesday | <input type="radio"/> Thursday  | <input type="radio"/> Saturday |                              |

What time would you normally visit this site?

- |                                  |                                     |                                |                                |
|----------------------------------|-------------------------------------|--------------------------------|--------------------------------|
| <input type="radio"/> 8 - 9 am   | <input type="radio"/> 11 am - 12 pm | <input type="radio"/> 2 - 3 pm | <input type="radio"/> 5 - 6 pm |
| <input type="radio"/> 9 - 10 am  | <input type="radio"/> 12 - 1 pm     | <input type="radio"/> 3 - 4 pm | <input type="radio"/> 6 - 7 pm |
| <input type="radio"/> 10 - 11 am | <input type="radio"/> 1 - 2 pm      | <input type="radio"/> 4 - 5 pm | <input type="radio"/> 7 - 8 pm |



## Budget savings - Proposals

Cambridgeshire County Council has to review the way it provides its household recycling service and identify annual savings of £440,000 by 1 April 2015, with further savings thereafter to help contribute to the total savings of £149 million required over the next five years.

To do this we are considering a number of options, as no option on its own will deliver the level of savings required. We would value your opinion on the broad savings options below:

How far do you agree with the following options to save money from 1 April 2015?

	Agree completely	Agree to some extent	Neither agree nor disagree	Disagree to some extent	Disagree completely
Close <b>1 existing site</b> within Cambridgeshire on a permanent basis (locations of which to be confirmed).	<input type="radio"/>	<input type="radio"/>	<input type="radio"/>	<input type="radio"/>	<input type="radio"/>
Transfer <b>1 existing site</b> within Cambridgeshire to a community facility to be managed by a Third Sector Operator e.g. charitable or voluntary organisations.	<input type="radio"/>	<input type="radio"/>	<input type="radio"/>	<input type="radio"/>	<input type="radio"/>
Close <b>2 existing sites</b> within Cambridgeshire on a permanent basis (locations of which to be confirmed).	<input type="radio"/>	<input type="radio"/>	<input type="radio"/>	<input type="radio"/>	<input type="radio"/>
Transfer <b>2 existing sites</b> within Cambridgeshire to a community facility to be managed by a Third Sector Operator e.g. charitable or voluntary organisations.	<input type="radio"/>	<input type="radio"/>	<input type="radio"/>	<input type="radio"/>	<input type="radio"/>
Close <b>3 existing sites</b> within Cambridgeshire on a permanent basis (locations of which to be confirmed).	<input type="radio"/>	<input type="radio"/>	<input type="radio"/>	<input type="radio"/>	<input type="radio"/>
Transfer <b>3 existing sites</b> within Cambridgeshire to a community facility to be managed by a Third Sector Operator e.g. charitable or voluntary organisations.	<input type="radio"/>	<input type="radio"/>	<input type="radio"/>	<input type="radio"/>	<input type="radio"/>
<b>Keep</b> the existing 9 Cambridgeshire Household Recycling sites but close each of them for 2 weekdays ensuring the next closest facility is open as an alternative.	<input type="radio"/>	<input type="radio"/>	<input type="radio"/>	<input type="radio"/>	<input type="radio"/>

## Budget savings - Proposals

If we keep the existing 9 Cambridgeshire Household Recycling sites but reduce the hours how far do you agree with each of the following:

	Agree completely	Agree to some extent	Neither agree nor disagree	Disagree to some extent	Disagree completely
Reduce the hours midweek across all sites to 10 - 4, with the existing hours remaining at weekends	<input type="radio"/>	<input type="radio"/>	<input type="radio"/>	<input type="radio"/>	<input type="radio"/>
Reduce the hours midweek to a standard 9 - 5 in summer and 9 - 4 in winter and at weekends to 9 - 6 in summer and 8 - 4 in winter	<input type="radio"/>	<input type="radio"/>	<input type="radio"/>	<input type="radio"/>	<input type="radio"/>
Reduce the hours midweek to a standard 10 - 4 for 4 days with a late night for one day midweek with 10 - 7 in summer and 10 - 6 in winter with the existing hours remaining at weekends	<input type="radio"/>	<input type="radio"/>	<input type="radio"/>	<input type="radio"/>	<input type="radio"/>

And finally, how far do you agree or disagree with the following two options:

	Agree completely	Agree to some extent	Neither agree nor disagree	Disagree to some extent	Disagree completely
Charge for waste streams such as soil, hardcore, plasterboard etc. based on the size of the vehicle (amounts to be confirmed)	<input type="radio"/>	<input type="radio"/>	<input type="radio"/>	<input type="radio"/>	<input type="radio"/>
Implement a permit scheme to limit larger vehicles and trailers etc. to 12 visits per year to avoid tax payers potentially paying for trade waste at our sites	<input type="radio"/>	<input type="radio"/>	<input type="radio"/>	<input type="radio"/>	<input type="radio"/>

## Opening hours

Thinking about the time you normally visit a household recycling centre, what is your view on the suggested change to weekday opening hours if the weekend hours remain the same as existing? *Please tick as many as apply.*

- |  |   |
|--|---|
| <input type="checkbox"/> I think the reduced weekday opening hours are ok.   | <input type="checkbox"/> I wouldn't mind if centres closed earlier on some days to allow an earlier opening time (e.g. same reduced hours but spread earlier in the day). |
| <input type="checkbox"/> I would prefer later opening hours (e.g. to 6 pm).  | <input type="checkbox"/> Other - please state:  |
| <input type="checkbox"/> I wouldn't mind if centres opened later on some days to allow a later closing time (e.g. same reduced hours but spread later in the day). |   |

Considering the possible cost-saving options shown previously, which of the following are you more likely to do as a result? *Please tick as many as apply.*

- |   |   |
|---|---|
| <input type="checkbox"/> I would recycle / compost more at home               | <input type="checkbox"/> I would use my City / District council's bulky waste collection service more (e.g. for items such as a fridge or a sofa) |
| <input type="checkbox"/> I would put more rubbish out for kerbside collection | <input type="checkbox"/> Other - please state:  |
| <input type="checkbox"/> I would recycle less                                 |   |

Please rank the following in order of importance to you:

	Most important	Second most important	Third most important	Fourth / Least important
The number of days sites are open	<input type="radio"/>	<input type="radio"/>	<input type="radio"/>	<input type="radio"/>
The number of hours sites are open	<input type="radio"/>	<input type="radio"/>	<input type="radio"/>	<input type="radio"/>
Keeping the existing household waste service free of charge	<input type="radio"/>	<input type="radio"/>	<input type="radio"/>	<input type="radio"/>
Maintaining the current number of sites (9) within Cambridgeshire	<input type="radio"/>	<input type="radio"/>	<input type="radio"/>	<input type="radio"/>

## Further comments

Do you have any comments or suggestions on the changes being proposed not already captured above?

## About you

Within this section we'd like to know a few details about you. These questions are **optional**, but your answers will help us to make sure we are attracting a wide range of people to respond to this consultation. They will only be used to monitor the different groups that are making use of our service and replying to this questionnaire. All responses will be kept anonymous.

What is your age?

- |                                |                               |                               |                                  |
|--------------------------------|-------------------------------|-------------------------------|----------------------------------|
| <input type="radio"/> Under 16 | <input type="radio"/> 25 - 34 | <input type="radio"/> 45 - 54 | <input type="radio"/> 65 - 74    |
| <input type="radio"/> 16 - 24  | <input type="radio"/> 35 - 44 | <input type="radio"/> 55 - 64 | <input type="radio"/> 75 or over |

Are you..

- Male  Female

How would you describe your ethnic background?

- |   |   |   |   |
|---|---|---|---|
| <input type="radio"/> White British                   | <input type="radio"/> Black or Black British: Caribbean     | <input type="radio"/> Mixed Race: White and Asian         | <input type="radio"/> Asian or Asian British: Chinese |
| <input type="radio"/> White: Irish                    | <input type="radio"/> Black or Black British: Other         | <input type="radio"/> Mixed Race: Other                   | <input type="radio"/> Asian or Asian British: Other   |
| <input type="radio"/> White: Gypsy and Traveller      | <input type="radio"/> Mixed Race: White and Black African   | <input type="radio"/> Asian or Asian British: Indian      | <input type="radio"/> Any other ethnic background     |
| <input type="radio"/> White: Eastern European         | <input type="radio"/> Mixed Race: White and Black Caribbean | <input type="radio"/> Asian or Asian British: Pakistani   | <input type="radio"/> Prefer not to say               |
| <input type="radio"/> White: Other                    |   | <input type="radio"/> Asian or Asian British: Bangladeshi |   |
| <input type="radio"/> Black or Black British: African |   |   |   |

Are your day-to-day activities limited because of a health problem or disability which has lasted, or is expected to last, at least 12 months?

- Yes  No  Prefer not to say



Many thanks

Many thanks for taking the time to complete this questionnaire. Your answers will help inform the decisions we make as part of this review.

**Please click "submit" below to send us your response.**

*You can print out your completed survey by clicking below - but please remember to submit your answer as well!*

*You will then be redirected to the CCC website page for Household Recycling.*

If you would like to discuss any aspect of this questionnaire, please contact us:

E-mail: [assetsandcommissioning@cambridgeshire.gov.uk](mailto:assetsandcommissioning@cambridgeshire.gov.uk)

Tel: 01223 715459

Address: Assets and Commissioning, Cambridgeshire County Council  
Shire Hall CC1305, Castle Hill  
FREEPOST CB176  
Cambridge CB3 0BR

#### **Data Protection**

Your personal information will be held and used in accordance with the Data Protection Act 1998. The Council will not disclose such information to any unauthorised person or body but where appropriate will use such information when carrying out its various functions and services.

If you would like to be advised of new consultations being run by the County Council, please email us at [rg\\_surveys@cambridgeshire.gov.uk](mailto:rg_surveys@cambridgeshire.gov.uk), including the word "register" in the subject field.