

John Vickery

From: Durrant Edward <Edward.Durrant@scambs.gov.uk>
Sent: 16 January 2015 17:15
To: John Vickery
Subject: FW: Missing link at Langate Green, off School Lane?

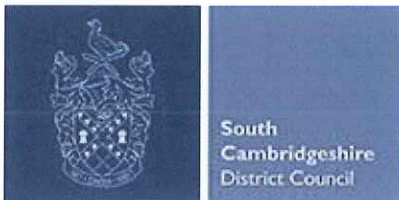
Hi John

Could you take a look at the e-mail exchange below. Is there anyone at the PC who might fit the bill?

Regards

Ed

Edward Durrant | Principal Planning Officer



South Cambridgeshire Hall | Cambourne Business Park | Cambourne | Cambridge | CB23 6EA
t: 01954 713266 | e: edward.durrant@scambs.gov.uk
www.scambs.gov.uk | [facebook.com/south-cambridgeshire](https://www.facebook.com/south-cambridgeshire) | twitter.com/SouthCambs

From: Rohan Wilson [<mailto:rohan.wilson@sustrans.org.uk>]
Sent: 15 January 2015 17:13
To: Durrant Edward
Cc: patrick joyce
Subject: RE: Missing link at Langate Green, off School Lane?

Thanks, Ed

It's good to know that the parish council is sufficiently pro-cycling that they are ready to raise criticism, and hopefully make interesting proposals.

As this narrow "missing link" is so short, and pretty useful I wonder if the PC would be happy to see it included on the map as a cycle route and perhaps with signs "Cyclists please give way" at each end? (Many people will choose to use it in any case...)

Does the PC know of any locally resident enthusiast who might like to get together with Patrick/you/me to decide what should be mapped as a cycle route and whether any interventions are necessary to support this? Sustrans is also keen to recruit volunteers, for monitoring NCN routes (which regrettably doesn't apply to Cambourne), for organising rides, or for examining and commenting on planning applications from a walking/ cycling perspective.

Patrick's promotion money and any City Deal money available for Cambourne should make all this possible?

Best,
Rohan

Rohan Wilson
Sustrans East of England

Area Manager, Cambridgeshire
4-6 Cowgate, Peterborough PE1 1NA
01733 319981
07768 422787
(usually working Tue to Fri)

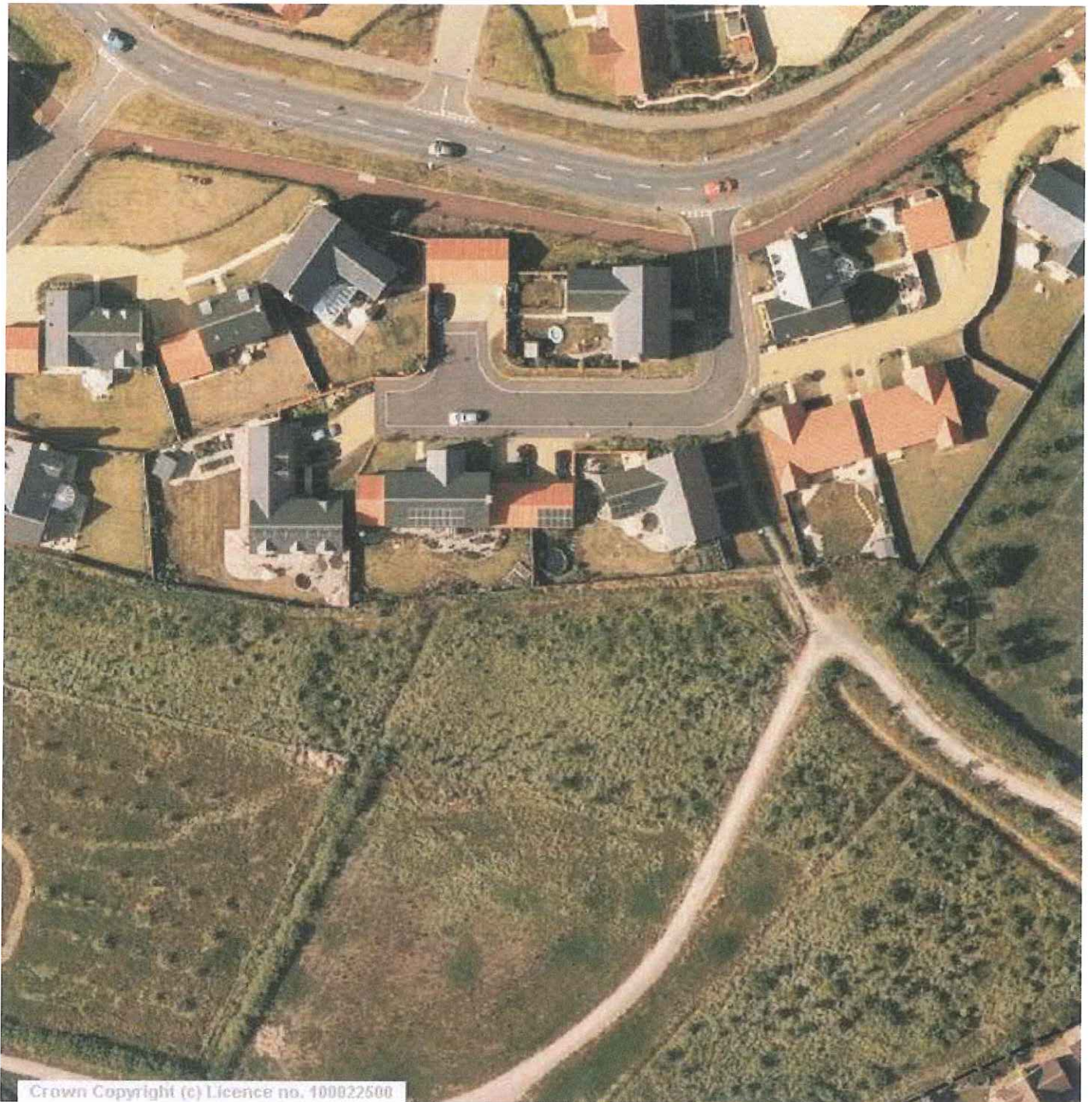
From: Durrant Edward [<mailto:Edward.Durrant@scambs.gov.uk>]
Sent: 14 January 2015 15:56
To: Rohan Wilson
Cc: patrick joyce
Subject: RE: Missing link at Langate Green, off School Lane?

Hi Rohan

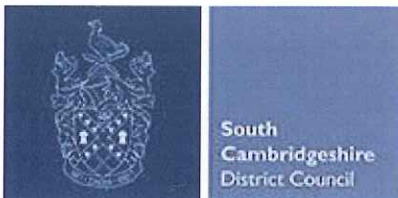
We cycled the Langate Green link on our tour. See the photo below. I am not sure whether it could be considered a cycleway as its quite narrow. As you can see the road is just a cul-de-sac. With regards to your second point the fact that cycleways sometimes just suddenly stop is not uncommon in Cambourne and is something that the parish council is always on about.

Regards

Ed



Edward Durrant | Principal Planning Officer



South Cambridgeshire Hall | Cambourne Business Park | Cambourne | Cambridge | CB23 6EA
t: 01954 713266 | e: edward.durrant@scambs.gov.uk
www.scambs.gov.uk | facebook.com/south-cambridgeshire | twitter.com/SouthCams

From: Rohan Wilson [<mailto:rohan.wilson@sustrans.org.uk>]

Sent: 12 January 2015 17:06

To: Durrant Edward

Cc: patrick joyce
Subject: Missing link at Langate Green, off School Lane?

Hi Ed

During my today's splurge on mapping Cambourne for Sustrans website I'm wondering whether the potential figure of eight (middle of map) can be completed with a short link to south off Langate Green. Your cycle map shows a road to the allotments due south from Langate Green, but Streetview doesn't show it.

<https://www.google.co.uk/maps/@52.217004,-0.073231,3a,90y,145.12h,83.37t/data=!3m4!1e1!3m2!1sqcYUqACNkKHVIhaXoBVEHA!2e0>

Do you have any local cycling volunteers who might help me with such details, or are you that person?

Oh, and another:

<https://www.google.co.uk/maps/@52.217476,-0.068291,3a,75y,37.85h,87.43t/data=!3m4!1e1!3m2!1sIISKbHXBB1SyPcNj84ObBQ!2e0>

The narrow path along northwest side of Monkfield Wood is against railing and too narrow to be considered cycle route, yet the wide, red footway (shown as a gap on the map) unhelpfully has "End of route" sign but no dropped kerb. I'm tempted to map up to High Street which I might show as an "on road" route – however, the contrast with the rest of the network (red, wide shared footway) is rather extreme.

(Copying Patrick in in case he can get the situation/ signs regularised...)

Many thanks
Rohan

Rohan Wilson
Sustrans East of England
Area Manager, Cambridgeshire
4-6 Cowgate, Peterborough PE1 1NA
01733 319981
07768 422787
(usually working Tue to Fri)

Sustrans makes smarter travel choices possible, desirable and inevitable. We're a leading UK charity enabling people to travel by foot, bike or public transport for more of the journeys we make every day. It's time we all began making smarter travel choices. Make your move and support Sustrans today. www.sustrans.org.uk

Sustrans Limited. Registered Office - Sustrans, 2 Cathedral Square, College Green, Bristol, BS1 5DD. Registered Charity 326550 (England & Wales), SC039263 (Scotland). Company Limited by Guarantee No: 1797726 Company Registered in England.

Sponsor a Mile of the National Cycle Network, the perfect gift for every cyclist.

<http://www.sustrans.org.uk/mymile>

Privileged/Confidential Information may be contained in this message.
If you should not have received it, tell me and delete it without forwarding, copying or disclosing it to anyone. The Council does not represent or warrant that it or any attached files are free from computer viruses or other defects. It and any attached files are provided, and may be used, only on the basis that the user assumes all responsibility for any loss, damage or consequence resulting directly or indirectly from them or their use. Any views or opinions presented are those of the author and do not necessarily represent those of