

CAMBOURNE PARISH COUNCIL

District of South Cambridgeshire

Council Meeting 5<sup>th</sup> February 2019

**East West Rail Bedford to Cambridge Route Option Consultation**

We have received notification that East West Rail have commenced consultation on the Bedford to Cambridge route option. This run from Monday 28<sup>th</sup> January to Monday 11<sup>th</sup> March. The proposal and routes consultation is on their website at [www.eastwestrail.co.uk/haveyoursay](http://www.eastwestrail.co.uk/haveyoursay) which has the consultation document which is about 24 pages and a technical report that has lots of extra detail and is about 100 pages. There is also access to the feedback form. The Parish Clerk has consulted with East West Rail and they are unable to arrange an individual meeting to discuss the consultation with the Parish Council. Their proposed method of consultation is to have a number of group meetings along the route for approximately ten councils at a time, with two representatives from each council attending. Extracts from the documents are attached to give an idea of the routes being considered. It will be placed on the 5<sup>th</sup> March Agenda to enable the Parish to submit a suitable response. There is a consultation event being held at the Cambridge Belfry on Back Lane, Saturday 2<sup>nd</sup> March 2019 between 10am – 14:00pm.

It is

**RECOMMENDED** the report be received.

**Subject:** RE: Cambourne Station Survey and imminent announcement of Routes for Central Section of EWR for public consultation

Dear Joseph and John,

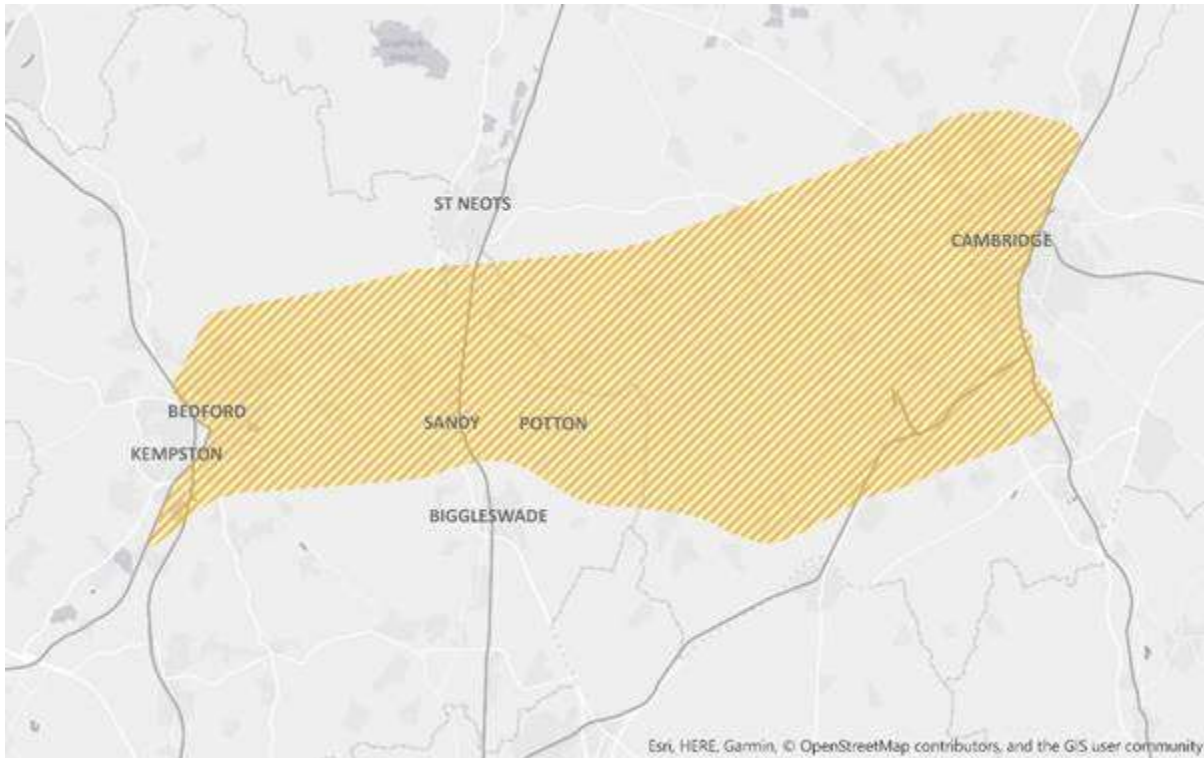
Thanks for you guidance and support in mounting the Cambourne Parish Station Survey. Good news and bad:

1. Good News. Unanimous support from all 78 respondents, in favour of a railway station at Cambourne. The majority of respondents would make regular frequent journeys by train instead of by car
2. Bad News. Disappointing response relative to Cambourne population and the significance of this issue to everyone living in and around Cambourne. Assuming say 3000 households, the response equates to approximately 2.5 % of households, so hardly overwhelming and unlikely to carry much weight when routes are being considered. Could even be construed as negative if there appears to be apathy or lack of enthusiasm for a train service.

Very recently there have been two significant developments of which you may well be aware:

1. At the influential Westminster Forum on December 13<sup>th</sup>, **Next steps for the Cambridge - Milton Keynes - Oxford Corridor**, Rob Brighthouse, Chairman of East West Rail Co Ltd in his presentation stated that a Northern Route for the Central Section Link from Bedford to Cambridge is under consideration.
2. On January 18<sup>th</sup>, Camargue Ltd, PR Consultants to EWRCo, sent the attached letter to interested parties as a prequel to announcement of routes for Public Consultation. *(Please note that whilst sent confidentially, this letter has been widely posted on social media and sent to the majority of Parishes concerned, so may be considered now to be in the public domain)*. Significantly the new Corridor within which routes for consultation will lie has altered radically from the so called C Corridor to accommodate a Northern Route, see diagram below. The northern limit of this corridor exactly coincides with the CBRR route, whilst the southern limit is the line of the C2-2 Route. This is the strongest hint yet that indeed a Northern Route via Cambourne has been recognised by EWR and will go forward for consultation.

**New Corridor published by EWRCo Ltd 18.01.2019, within which Routes for Public Consultation will lie.**



We are now anticipating that CBRR via Cambourne will be up for consultation, which is gratifying and encouraging. But we must suppose there will be strong opposition to it from EWR and Network Rail and very probably the Treasury on cost grounds. So whilst the initial objective of a Northern Route being in the running has been achieved, we must anticipate a fierce battle to get it adopted. That takes us back to the Survey, and the thrust of this message is to ask if your Council can reinvigorate interest and awareness in the Survey, whilst perhaps informing your Parishioners that a public consultation on routes is imminent. If Cambourne Residents do want a railway to augment and relieve reliance on the road, then they must make their voices heard. In other words, if you haven't signed the Survey, please do so now and spread the word. If Cambourne loses out on a railway station and hasn't expressed the wish to have one, the chance will be irrevocably and permanently lost. A Guided Bus cannot and will not offer compensatory capacity, comparable destinations both East and West nor reduce dependence on increasingly congested roads. The Survey could have a critical influence in the final selection if it is strongly supported.

Are you able to stimulate support for the Survey via your website, personal interaction by Parish and District Councillors with Residents, local publications or by any other means? Also please can you tell us at CBRR how we might be able to contribute to spreading the word. For instance, is leafleting in the Parish an established way of disseminating important information.

Thanks so much for your support with this.

Kind regards,

Philip Paxman  
Member CBRR

**Subject:** East West Railway Company: working with your community

Sent on behalf of Simon Blanchflower, Chief Executive of the East West Railway Company.  
Hardcopy version to follow.

---

---

---

---

**East West Railway Company: working with your community**

I am writing to you as we enter the new year to introduce the East West Railway Company and myself as its first Chief Executive.

You may already know that the Secretary of State for Transport set up the East West Railway Company in 2017, giving us an ambitious challenge to accelerate delivery of rail infrastructure and passenger services between Oxford and Cambridge.

For the area between Bedford and Cambridge, this means creating an entirely new line which best serves the community, supports economic growth and new homes, and provides the best possible experience for passengers.

We have spent much of the past year developing route options for this line and will soon launch our first phase of public consultation. It will outline several different options for connecting Bedford and Cambridge via an approximately 30-mile stretch of brand-new rail line with the potential for new stations. For illustration, I enclose a map indicating the broad route corridor into which all route options fall.

This early, non-statutory consultation provides us with an opportunity to explore the opportunities and challenges of each option with a wide range of residents and stakeholders

During the consultation we will hold public events across the area. Consultation materials will be made available online and at convenient locations in the community. Although many people will know something of the project, we are aware that we are a new delivery team and that this will be many people's first opportunity to view our options and consider the project.

Recognising the important role you play representing your community, I would like to invite you to attend one of our pre-consultation sessions on 25 January. We will use this session to take you through the route options and provide consultation materials, as well as detailing the format and timings for the public events. Details of the preview events are below:

- Bedford Borough Council, Borough Hall, Cauldwell St, Bedford MK42 9AP  
Friday 25 January  
12noon – 1.30pm
  
- Cambridgeshire County Council, Kreis Viersen Room, Shire Hall, Castle Hill, Cambridge, CB3 0AP  
Friday 25 January  
3pm – 4.30pm

For those who are not available on 25 January, there will be a conference call on 28 January at 7pm. Please email [contact@eastwestrail.co.uk](mailto:contact@eastwestrail.co.uk) by 5pm on 22 January if you would like to join this call. We will respond with dial-in details.

A copy of this letter has also been sent by mail. I look forward to meeting you in due course but if you have any immediate questions please don't hesitate to email team on [contact@eastwestrail.co.uk](mailto:contact@eastwestrail.co.uk).

Yours sincerely



Simon Blanchflower

Chief Executive

