

# CAMBOURNE TOWN COUNCIL

District of South Cambridgeshire

Council Meeting 6<sup>th</sup> April 2021

## CORRESPONDENCE

The below schedule is a summary of correspondence circulated by the Town Clerk to Councillors

	FROM	SUBJECT
17.1	Ministry of Housing	Local Authority Meetings
17.2	Rob Moy- Atkins Global	Project Newsletter- Cambourne Village College Expansion
17.3	Cambridge Gliding Centre	Minutes of Consultative Committee
17.4	South Cambs District Council	Email regarding 'Zero Carbon Communities' grant- round 3
17.5	Alison Melton- Chief of staff (constituency) to Anthony Browne MP	Email in response to letter sent to Anthony Browne on 16 <sup>th</sup> March 2021
17.6	SCDC	Thank you email to volunteer coordinators and parish councillors
17.7	Bourn Parish Council	Email regarding s106 funding for provision of a cycleway and footpath down the Broadway to Bourn village

Correspondence circulated since the last meeting by email

FROM	SUBJECT
Greater Cambridge Local Plan team	Briefing note regarding the housing trajectory and five-year housing land supply calculations that are being published
Cambridgeshire Pension Fund and Northamptonshire Pension Fund	Email regarding i-Connect submissions
Anthony Browne MP	March News Email from Anthony Browne MP
CAPALC	E- Bulletin March 2021
Stephen Kelly	Email regarding hyperlink issues sent in previous email
CAPALC	Email- Code of Conduct revised training
Keep Britain Tidy	Email to announce launch of '2021 Great British Spring Clean' campaign
South Cambs District Council	March 2021 parish e-bulletin
Department for Transport	Document promoting cycling and walking
Highways England	Email regarding A14 wildlife habitat



Ministry of Housing,  
Communities &  
Local Government

**Luke Hall MP**

*Minister of State for Regional Growth and Local Government*

**Ministry of Housing, Communities and Local Government**

Fry Building  
2 Marsham Street  
London  
SW1P 4DF

Council Leaders  
Principal Councils in England

Tel: 0303 444 3440

Email: [luke.hall@communities.gov.uk](mailto:luke.hall@communities.gov.uk)

[www.gov.uk/mhclg](http://www.gov.uk/mhclg)

25 March 2021

Dear Colleague,

## **LOCAL AUTHORITY MEETINGS**

It is just over a year to the day since the Prime Minister asked us all to stay at home, and local authorities across England have risen magnificently to the challenges of this period. There has been a dramatic shift in your day-to-day operations, alongside new difficulties and demands, and I commend the efforts of all councillors and officers in supporting your communities and ensuring vital business continues during these unprecedented times.

As you will be aware, The Local Authorities and Police and Crime Panels (Coronavirus) (Flexibility of Local Authority and Police and Crime Panel Meetings) (England and Wales) Regulations 2020 do not apply to meetings on or after 7 May 2021.

Extending the regulations to meetings beyond May 7 would require primary legislation. The Government has considered the case for legislation very carefully, including the significant impact it would have on the Government's legislative programme which is already under severe pressure in these unprecedented times. We are also mindful of the excellent progress that has been made on our vaccination programme and the announcement of the Government's roadmap for lifting Covid-19 restrictions. Given this context, the Government has concluded that it is not possible to bring forward emergency legislation on this issue at this time.

As outlined in the Government's Spring 2021 Covid-19 Response, our aim is for everyone aged 50 and over and people with underlying health conditions to have been offered a first dose of the Covid-19 vaccine by 15 April, and a second dose by mid-July. While local authorities have been able to hold meetings in person at any time during the pandemic with appropriate measures in place, the successful rollout of the vaccine and the reduction in cases of Covid-19 should result in a significant reduction in risk for local authority members meeting in person from May 7, as reflected in the Government's plan to ease Covid-19 restrictions over the coming months.

I recognise there may be concerns about holding face-to-face meetings. Ultimately it is for local authorities to apply the Covid-19 guidance to ensure meetings take place safely, but we have updated our guidance on the safe use of council buildings to highlight ways in which you can, if necessary, minimise the risk of face-to-face meetings, and we will work with

I am copying this letter to the Mayor of London, the chairs of the Local Government Association and the National Association of Local Councils, as well as the Home Secretary and the Secretary of State for the Environment, Food and Rural Affairs in respect of other authorities covered by the current meetings regulations, including fire and rescue authorities, police and crime panels, national park authorities, the Broads Authority, and conservation boards.

Yours sincerely,

A handwritten signature in blue ink, appearing to read 'L Hall', is centered below the closing text.

**LUKE HALL MP**

**Cc.** Rt Hon Priti Patel MP, Home Secretary  
Rt. Hon. George Eustice MP, Environment Secretary  
Sadiq Khan, Mayor of London  
Cllr. James Jamieson, LGA Chairman  
Cllr. Sue Baxter, NALC Chairman

clerk@cambourneparishcouncil.gov.uk

**From:** Moy, Robert <Robert.Moy@atkinsglobal.com>  
**Sent:** 29 March 2021 11:30  
**To:** clerk@cambourneparishcouncil.gov.uk; caxtonpc@lgs-services.co.uk  
**Cc:** Spittles Vikki; Scholes, Jack  
**Subject:** FW: Cambourne Village College - Phase 3 expansion - Notification of Public exhibition.  
**Attachments:** Consultation Newsletter\_.pdf

Please find attached a copy of the newsletters advising of a virtual public consultation for the expansion of Cambourne Village College.

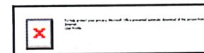
This will be distributed to residents and businesses local to the school shortly, however, we thought that we'd provide an early access of the newsletter for your information, so you are aware should any of your residents raise it with you.

Kind regards,

Rob

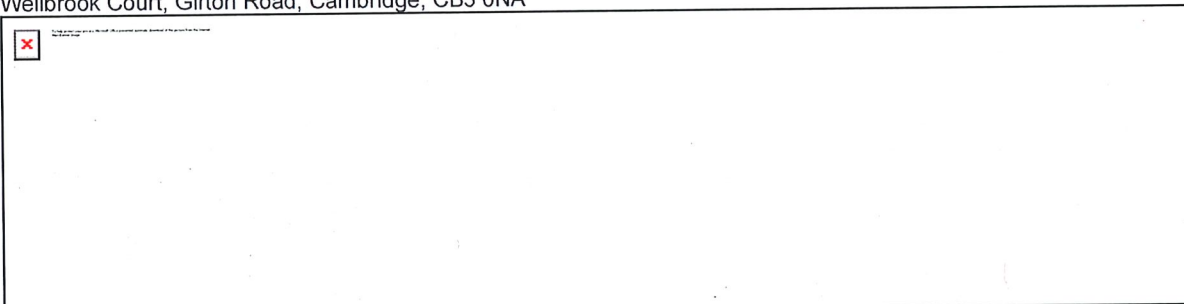
**Rob Moy** BSc

Associate Project Manager  
UK & Europe  
Engineering, Design & Project Management



+44 (01) 245 245135 07803 260389

**Faithful+Gould, member of the SNC-Lavalin Group**  
Wellbrook Court, Girton Road, Cambridge, CB3 0NA



Company

This email and any attached files are confidential and copyright protected. If you are not the addressee, any dissemination of this communication is strictly prohibited. Unless otherwise expressly agreed in writing, nothing stated in this communication shall be legally binding. The ultimate parent company of the Atkins Group is SNC-Lavalin Group Inc. Registered in Québec, Canada No. 059041-0. Registered Office 455 boul. René-Lévesque Ouest, Montréal, Québec, Canada, H2Z 1Z3. A list of Atkins Group companies registered in the United Kingdom and locations around the world can be found at <http://www.atkinsglobal.com/site-services/group-company-registration-details>

Consider the environment. Please don't print this e-mail unless you really need to.



# Project Newsletter

## Cambourne Village College

April 2021



### **PUBLIC EXHIBITION 14<sup>th</sup> April 2021**

Cambridgeshire County Council is pleased to announce the development of proposals for the further expansion of Cambourne Village College.

As you are aware Cambourne is a growing community and the development to the west of Cambourne will generate additional secondary school places.

The Council has been working with The Cam Academy Trust to develop the expansion proposals in response to this anticipated demand and also to provide Cambourne with its own 350 place Post 16 Centre.

The Council has appointed Kier Construction to undertake the associated design and build project.

The project is at an early stage and the team is working in consultation with council officers and their technical advisors to develop the outline proposals in greater detail.

We recognise the importance and value of consulting with the local community.

We would very much welcome your views on the outline plans, as part of the development of the scheme and ahead of submission of a formal planning application, which is currently scheduled for early June 2021.

These remain unprecedented times so a public exhibition of emerging plans at the college is not viable at this time.

To overcome this we intend to share the plans virtually and they will be available on the Cambourne Village College website (<https://www.cambournevc.org/>). A link to the plans is provided on the homepage.

Plans will be available from **14<sup>th</sup> April 2021**. Details of how you can share your views on emerging design proposals are also provided.

We recognise that not everyone will have internet access so if it is not possible for you to view the plans online, please contact Kier Construction who will be pleased to make alternative arrangements with you.

Kier contact details are as follows:

Kier Construction  
Building 3000, Cambridge Research Park  
Waterbeach CB25 9PD  
Tel: 01223 205900  
Email: [KCE.CVC3B@kier.co.uk](mailto:KCE.CVC3B@kier.co.uk)

We would very much welcome your views by 30th April to allow them to be considered by the project team in advance of any planning submission.

Subject to a satisfactory planning process, it is intended that the construction work will commence in early 2022, with a view to pupils and staff being able to start to use their new accommodation from September 2023.

**Thank you for your time and we look forward to hearing from you.**





## CAMBRIDGE GLIDING CLUB – CONSULTATIVE COMMITTEE

MINUTES OF MEETING: 1930 HRS WEDNESDAY 11<sup>TH</sup> NOVEMBER 2020 BY ZOOM

### PRESENT

Pete Joslin	CGC Chairman
Michael Samuels	CGC Secretary
Robert Murden	Little Gransden Parish Council
Tony Goss	Gamlingay Parish Council
Nick Ginn	Great Gransden Parish Council
Andrew Halket	Caxton Parish Council
Sharon Brown	Longstowe Parish Council
Daniel Ashby	Abbotsley Parish Council
Dean Scrivener	South Cambridgeshire District Council
Lorraine Casey	South Cambridgeshire District Council

### APOLOGIES

Marian Burling	Croydon Parish Council
John Archer	Waresley Parish Council

### MINUTES OF THE PREVIOUS MEETING

The minutes of the previous meeting, held on 13<sup>th</sup> November 2019, were accepted as a correct.

### MATTERS ARISING

- A copy of the AAIB report into the Jabiru accident on 27<sup>th</sup> October 2019 is being Emailed alongside these minutes, and can also be found at <https://www.gov.uk/aaib-reports/aaib-investigation-to-jabiru-ul-450-g-royc>
- Pete talked through the actions that the BGA and the gliding club have taken to ensure that the risk of ground collisions continue to be minimised.

### CHAIRMAN'S REPORT

- Pete talked through the gliding club's operations for the club year (12 months year to the end of September):-
  - The gliding club's activities were severely affected both by the very poor winter weather and subsequently by restrictions arising from the COVID-19 epidemic
  - We flew on only 159 days, the lowest since we moved to Gransden Lodge in 1991
  - We did 4,328 launches (48% of prior year) in total of which 984 were by aerotow, 71 by self launching sailplanes and 3,273 by winch.
  - We hardly flew between December and April.
  - The only month where we had more launches than the previous year was September.

- The maximum number of aerotows and self launches undertaken in any one day was 34 on 12th July.
- Despite the poor activity levels we sent 13 people solo
- There were still some very good cross-country days:-
  - 25 flights over 500Km
  - 3 flights over 600Km
- Membership has suffered as a result of Covid-19 but recruitment picked up during August and September.
- The Regionals Competition planned for August was cancelled due to coronavirus.
- A low-key Cloud Rally went ahead at the end of August with rather indifferent weather.
- We were unable to proceed with the planned flying day for local parishes because of COVID-19 restrictions.

#### **PLANNING MATTERS**

- Pete explained that 2019/20 was to be year 2 of the agreed trial of extended flying hours for aerotowing prior to an application for permanent permission.
- 2020 cannot be regarded as in any way typical of a normal flying year. The two planning authorities have advised that temporary permissions cannot be extended for a further trial year.
- We have decided that we will not re-apply at the present time, but reserve the right to do so at some future time, together with any other operational changes requiring formal permissions.
- In the meantime we will aerotowing between 9am and 6pm as before.

#### **2021 COMPETITIONS**

- Pete said that no firm decisions have yet been made regarding competitions that might be run in 2021, because of the continued uncertainty caused by the epidemic.
- However, we have pencilled the following dates in the diary:-
  - Gransden Regionals: 7<sup>th</sup> – 15<sup>th</sup> August 2021
  - Cloud Rally: 21<sup>st</sup> – 29<sup>th</sup> August 2021
- We will advise if and when plans are be firmed up.
- We will talk to Mark Jefferies about putting in place the necessary arrangements regarding his Aerobatics competition scheduled for the 8<sup>th</sup> August, and the Little Gransden Air Show scheduled for the 29<sup>th</sup> August.

#### **COMPLAINTS RECEIVED SINCE LAST MEETING**

- Pete said that since the last meeting on 13th November 2019 we have received 6 complaints from 4 individuals as follows:-
  - 4 related to tug tow out paths
  - 1 related to an aerotow retrieve from Gransden Lodge
  - 1 related to a paramotor flying in the vicinity

- Pete said that all complaints have been responded to, and he has had conversations with the tug pilots involved. He said that the sooner we get complaints regarding tow out routes the easier it is to act upon it.
- We have now put in an improved process to ensure that any tug pilots from other clubs carrying out aerotow retrieves from Gransden Lodge (usually only a handful each year) are properly briefed. They will now also be given a card showing the routes to follow.
- Dean said that South Cambridgeshire District Council have received a complaint regarding paramotor activity. Pete said that whilst we have seen some paramotor activity, we don't allow members or non-members to fly paramotors from the club. He said that unfortunately they are almost impossible to identify and can launch from anywhere.
- In his EMail to say that he was not able to attend the meeting, John Archer mentioned that he had received a couple of complaints from Waresley regarding the Gliding Club:-
  - They were both minor but John could appreciate the irritation as he lives in the same area. There were a couple of occasions where aerotow aircraft chose to fly westwards over the centre of the village. There were only 4 or perhaps 5 flights but it was just irritating that they did not fly just half a mile to the north of the village. In view of the short duration an immediate complaint seemed unnecessary.
  - Pete said that he would contact John Archer to follow these up.

#### **LUTON AIRSPACE PROPOSALS**

- Pete said that NATS (National Air Traffic Service) are entering a consultation phase regarding changes to airspace that would create a holding stack for Luton bound aircraft over Huntingdon and St. Neots and arrival routes that would pass over Abbotsley and Gamlingay.
- Pete said that the Luton Airspace Proposals are likely not to interfere with our gliding operations apart from particularly good days for us when the cloud base is high.
- However the proposals will tend to squeeze traffic lower down and the gliding club will be looking at the proposals in some more detail.
- Pete said that the new routes will be for northerly arrivals, e.g. from Scotland, Belfast, Iceland, whereas the majority of traffic into Luton comes from the South West or East.

#### **ANY OTHER BUSINESS**

- Bob Murden said that it was nice to see the gliding club wreath on the war memorial. Pete said that it was just a shame that coronavirus restrictions meant that more members of the gliding club couldn't be there on Remembrance Day.
- In response to Sharon's request, Michael said that he would send out a copy of the slides Pete had used with the minutes.
- Pete said that members of the consultative committee were always welcome to come and see us at the club, and that he would be happy to show them around and answer any questions.

#### **DATE OF NEXT MEETING**

- Wednesday 7<sup>th</sup> April 2021 at 19:00hrs at Cambridge Gliding Centre



26<sup>th</sup> March 2021

## Consultative Committee Meeting – Wednesday 7th April 2021

The following individuals or their elected representatives are invited to attend the next meeting of the Consultative Committee which will commence at 7.00pm on Wednesday 7th April 2021 by Zoom at <https://us02web.zoom.us/j/86087732675?pwd=S215aTd2T2I2Rk9USIVqQ1NXMEJzUT09> :-

Katie Bates, Clerk  
Daniel Ashby, Councillor  
Sally Walmesley, Clerk  
Michele Hutton, Clerk  
John Vickery, Clerk  
Andrew Halket, Member  
Gail Stoehr, Clerk  
Nathan Spencer, Chairman  
Marian Burling, Clerk  
Roger Pinner, Chairman  
Tony Goss, Councillor  
Leanne Bacon & Kirstin Rayner, Clerks  
Nick Ginn, Councillor  
Catherine Fox, Clerk  
Kim Wilde, Clerk  
Robert Murden, Councillor  
Sylvia Sullivan, Clerk  
Will Bevan, Councillor  
Sharon Brown, Clerk  
John Archer, Councillor  
Rod Kerr, Clerk

Christina Christmas  
Tom Hipwell  
Mark Jefferies

Alison Twyford, Planning Department  
Louise Newcombe, Planning Department  
Rebecca Ward, Planning Department  
Dean Scrivener, Planning Department  
Katie Christodoulides, Planning Department  
Lorraine Casey, Planning Department

Pete Joslin, Chairman

Abbotsley Parish Council  
Abbotsley Parish Council  
Arrington Parish Council  
Bourn Parish Council  
Cambourne Parish Council  
Caxton Parish Council  
Caxton Parish Council  
Croxtton Parish Council  
Croydon Parish Council  
Eltisley Parish Council  
Gamlingay Parish Council  
Gamlingay Parish Council  
Great Gransden Parish Council  
Great Gransden Parish Council  
Hatley Parish Council  
Little Gransden Parish Council  
Little Gransden Parish Council  
Longstowe Parish Council  
Longstowe Parish Council  
Waresley Parish Council  
Waresley Parish Council

Landlord of part of airfield  
Landlord of part of airfield  
Little Gransden Airfield Owner

Huntingdonshire District Council  
Huntingdonshire District Council  
South Cambridgeshire District Council  
South Cambridgeshire District Council  
South Cambridgeshire District Council  
South Cambridgeshire District Council

Cambridge Gliding Centre

The proposed agenda is attached. Please email me at [secretary@camgliding.uk](mailto:secretary@camgliding.uk) to let me know of any additional items that you wish to discuss.

I also attach the minutes of the previous meeting on the 11<sup>th</sup> November 2020.

Kind regards,

Michael Samuels  
Secretary, Cambridge Gliding Centre

Cambridge Gliding Centre Consultative Committee Meeting

7.00pm Wednesday 7<sup>th</sup> April 2021

By Zoom:

<https://us02web.zoom.us/j/86087732675?pwd=S215aTd2T2I2Rk9USIVqQ1NXMEJzUT09>

**AGENDA**

1. Apologies for absence
2. Minutes of the meeting held on 11<sup>th</sup> November 2020
3. Matters arising
4. Chairman's report
5. Airfield Access
6. 2021 Competitions
7. Complaints received since last meeting
8. Any other business
9. Date for next meeting

**From:** Michael Samuels <michael\_x\_samuels@yahoo.co.uk>  
**Sent:** 26 March 2021 07:51  
**To:** clerk@abbotsleypc.org.uk; danielmashby@gmail.com; parishclerk@arrington.org.uk; parish.clerk@bourn.org.uk; clerk@cambourneparishcouncil.gov.uk; clerk@caxton-pc.org.uk; a.halket@caxton-pc.org.uk; croxtpc@gmail.com; croydonpc@bobburling.plus.com; rtp@eplusmail.com; clerk@gamlingay-pc.gov.uk; anthony.goss@gamlingay-pc.gov.uk; gransdenpc@hotmail.co.uk; ginncanuk@gmail.com; hatley-parish-clerk@hatley.info; clerk.lgpc@aol.com; bobmurdenlgpc@btinternet.com; LongstowePC.clerk@hotmail.com; wbevan.longstowe@btconnect.com; clerk.waresleypc@gmail.com; archerja8@gmail.com; Louise.Newcombe@huntingdonshire.gov.uk; Alison.Twyford@huntingdonshire.gov.uk; Rebecca.Ward@scams.gov.uk; Dean.Scrivener@scams.gov.uk; lorraine.casey@greatercambridgeplanning.org; Katie.Christodoulides@scams.gov.uk; christina.christmas@yahoo.co.uk; tomhipwell@me.com; yak@yakuk.com; Peter Joslin  
**Subject:** Cambridge Gliding Centre Consultative Committee Meeting: Wednesday April 7th at 7pm by Zoom  
**Attachments:** Cambridge Gliding Club Consultative Committee - Draft Minutes 111120 v1.1.docx; Invitation and Agenda 07\_04\_2021 v0.1.docx

Dear All,

The next meeting of the Cambridge Gliding Centre Consultative Committee Meeting will take place at 7pm on Wednesday 7th April by Zoom at:

<https://us02web.zoom.us/j/86087732675?pwd=S215aTd2T2I2Rk9USlVqQ1NXMEJzUT09>

- Meeting ID: 860 8773 2675
- Passcode: 713498

The Agenda is as follows:-

1. Apologies for absence
2. Minutes of the meeting held on 11<sup>th</sup> November 2020
3. Matters arising
4. Chairman's report
5. Airfield Access
6. 2021 Competitions
7. Complaints received since last meeting

8. Any other business
9. Date for next meeting

Please let me know if there are any additional items that you wish to discuss.

I attach a copy of the minutes of the last meeting on 11th November 2020.

Kind regards,

Michael Samuels  
Secretary, Cambridge Gliding Club



[clerk@cambourneparishcouncil.gov.uk](mailto:clerk@cambourneparishcouncil.gov.uk)

**From:** ZCC <ZCC@scambs.gov.uk>  
**Sent:** 24 March 2021 12:10  
**To:** Dyer Emma  
**Cc:** Mellon Siobhan  
**Subject:** Zero Carbon Communities grant- round 3

## Zero Carbon Communities grant- round 3 opens 10 May

Round 3 of our Zero Carbon Communities Grant will open on Monday 10 May to provide funding of between £1,000 and £15,000 to parish councils and voluntary sector organisations for projects that support the shift to zero carbon emissions by 2050.

This time we will be inviting applications under two main themes plus an extra general theme for exceptional projects; with each theme being allocated a nominal percentage of a £100k grant fund:

- Community buildings (40%)
- Nature (40%)
- Other projects (20%)

The closing date for applications is 30 July.

We will be looking for projects which achieve wider community engagement and behaviour change around climate change and the environment as well as a measurable reduction in carbon emissions.

Potential applicants will also be provided with an opportunity to join a workshop on how to make successful grant applications; date to be announced shortly.

Please email [zcc@scambs.gov.uk](mailto:zcc@scambs.gov.uk) if you would like to discuss your potential project before making an application. More information will also be available soon [on this part of our website](#).

Kind regards,

Emma

**Emma Dyer** | Project Officer, Climate & Environment

Please note my normal working days are: Monday 9:00-6:00, Tues 9:00-4:00, Weds-Fri 9:00-5:00



South Cambridgeshire Hall | Cambourne Business Park | Cambourne | Cambridge | CB23 6EA  
t: 01954 713344 | m: 07784 360907 e: [emma.dyer@scambs.gov.uk](mailto:emma.dyer@scambs.gov.uk)  
[www.scambs.gov.uk](http://www.scambs.gov.uk) | [facebook.com/south-cambridgeshire](https://facebook.com/south-cambridgeshire) | [twitter.com/SouthCambs](https://twitter.com/SouthCambs)

**Disclaimer**

The information contained in this communication from the sender is confidential. It is intended solely for use by the recipient and others authorized to receive it. If you are not the recipient, you are hereby notified that any disclosure, copying, distribution or taking action in relation of the contents of this information is strictly prohibited and may be unlawful.

This email has been scanned for viruses and malware, and may have been automatically archived

clerk@cambourneparishcouncil.gov.uk

---

**From:** GOV.UK Email <gov.uk.email@notifications.service.gov.uk>  
**Sent:** 25 March 2021 10:03  
**To:** clerk@cambourneparishcouncil.gov.uk  
**Subject:** Update from GOV.UK for: Cycling and walking investment strategy 2



Update from GOV.UK for:

## Coronavirus (COVID-19)

---

### [Cycling and walking investment strategy 2](#)

Page summary:

Announcement of the planned creation of a second cycling and walking investment strategy for actions beyond 2021.

Change made:

First published.

Time updated:

10:02am, 25 March 2021

---

## Why am I getting this email?

You asked GOV.UK to send you an email each time we add or update a page about:

Coronavirus (COVID-19)

[Unsubscribe](#)

[Change your email preferences](#)



clerk@cambourneparishcouncil.gov.uk

---

**From:** MELTON, Alison <alison.melton@parliament.uk>  
**Sent:** 24 March 2021 10:15  
**To:** clerk@cambourneparishcouncil.gov.uk  
**Cc:** cllr.odwyer@cambourneparishcouncil.gov.uk  
**Subject:** Fw: DEVELOPMENT CORPORATIONS  
**Attachments:** A Browne Letter 16.03.21.pdf

Dear John,

Many thanks for your email to Anthony and apologies for the delay in getting back to you. I hope you don't mind me responding on his behalf. Anthony would be happy to discuss the issue of development corporations with you, but has suggested, in the first instance, that we investigate how Cambourne Town Council can engage directly with officials at MHCLG through their initial stakeholder engagement process, which is due to launch any time now and is the precursor to a wider public consultation on a 'vision statement' later in the year.

I have emailed an official contact I have at MHCLG to ask for further information about how you can get involved in this and am awaiting his response. As soon as I know more, I will be in touch.

Based on conversations that Anthony has had with the Housing Minister (which I also attended), it is clear that the conversations about the long-term spatial strategy are at an early stage, which would account for the lack of detail at this stage on the substance of the proposed development corporations.

Anthony will continue to engage with local residents and MHCLG on this project, which is of huge importance to the future of South Cambridgeshire and the wider region.

I'll be in touch when I have more information about the early stakeholder engagement process. Should you have any queries in the meantime, please don't hesitate to get in touch.

Kind regards,

Alison Melton  
(07814) 703250



**Alison Melton**  
**Chief of Staff (Constituency) to Anthony Browne MP**  
**Member of Parliament for South Cambridgeshire**  
Tel: 01223 603677, email: [alison.melton@parliament.uk](mailto:alison.melton@parliament.uk)

View Anthony's privacy policy [here](#).

---

**From:** clerk@cambourneparishcouncil.gov.uk <clerk@cambourneparishcouncil.gov.uk>  
**Sent:** 16 March 2021 16:06  
**To:** BROWNE, Anthony <anthony.browne.mp@parliament.uk>  
**Cc:** cllr.odwyer@cambourneparishcouncil.gov.uk <cllr.odwyer@cambourneparishcouncil.gov.uk>  
**Subject:** DEVELOPMENT CORPORATIONS

Dear Anthony  
Please find attached a letter from the Town Chair regarding the Development Corporations including Cambourne.

John Vickery  
Cambourne Town Clerk

Town Council Office  
Cambourne Community Centre  
High Street  
Cambourne  
CB23 6GW

T 01954 714403  
M 07772703967

UK Parliament Disclaimer: this e-mail is confidential to the intended recipient. If you have received it in error, please notify the sender and delete it from your system. Any unauthorised use, disclosure, or copying is not permitted. This e-mail has been checked for viruses, but no liability is accepted for any damage caused by any virus transmitted by this e-mail. This e-mail address is not secure, is not encrypted and should not be used for sensitive data.



# CAMBOURNE TOWN COUNCIL

District of South Cambridgeshire

Town Chairman Cllr J O'Dwyer  
Town Clerk John Vickery

16<sup>th</sup> March 2021

Anthony Browne MP  
Broadway House,  
149-151 St Neots Road,  
Hardwick  
CB23 7QJ

Dear Anthony,

Information about 'The OxCam Arc' refers to the establishment of four Development Corporations, one of which is proposed for Cambourne. Below are some excerpts from Government documents citing the Development Corporations.

(Extract from, Budget 2020 – Policy Paper- Updated 12 March 2020)

## 2.20 The OxCam Arc

The government has designated the corridor of land connecting Oxford, Milton Keynes, Bedford and Cambridge (the OxCam Arc) as a key economic priority. Earlier this year, the government announced the East West Rail Company's preferred route for the new line between Bedford and Cambridge. The government will also, subject to planning consents, build a new rail station at Cambridge South, improving connectivity to the world-leading research facilities of the Cambridge Biomedical Campus – the largest cluster of medical and life sciences research in Europe.

The Budget announces plans to develop, with local partners, a long-term Spatial Framework to support strategic planning in the OxCam Arc. This will support the area's future economic success and the delivery of the new homes required by this growth up to 2050 and beyond. The government is also going to examine and **develop the case for up to four new Development Corporations in the OxCam Arc at Bedford, St Neots/Sandy, Cambourne and Cambridge**, which includes plans to explore the case for a New Town at Cambridge, to accelerate new housing and infrastructure development.

<https://www.gov.uk/government/publications/budget-2020-documents/budget-2020>



(Extracts from, Planning for sustainable growth in the Oxford-Cambridge Arc: an introduction to the spatial framework 2020 – Policy Paper- 18 February 2021)

**1.20 East-west connectivity is poor.** Cranfield University is 7 miles from Milton Keynes but getting there by public transport involves a 45-minute bus journey. Cambridge is further away – 45 miles – and can take nearly 3 hours by a patchwork of buses and trains. This is driving up car dependency, which in turn is causing [high and increasing congestion](#). The East West Rail scheme will significantly improve east-west rail connectivity, but more needs to be done to promote sustainable transport, raise first and last mile connectivity around transport hubs, and better connect communities, employers, employees, businesses, cultural attractions, nature and universities, including through public transport, cycling and walking – making these the first choice for journeys.

**1.21 Housing affordability is poor.** The supply of new homes in the Arc's main centres has not kept up with demand – in Cambridge, the affordability ratio has risen to 12.76, in Oxford to 11.45 in 20 years, and in Chiltern and South Bucks to 17.62 and 15.56 respectively (the England average is 7.83) (ONS, 2019. Table 5C. Ratio of median house price to median gross annual workplace-based earnings by LAD). This has put home ownership out of reach for many. The wider economic effect of this is to make it harder for businesses to attract the skilled workers they need, to locate in the most productive locations, and is forcing longer and more polluting journeys as people travel longer distances to get to work. Population growth has been highest in areas of comparative housing affordability – Corby (30% since 2000), Milton Keynes (28%) and Peterborough (27.5%) (this is also explained by the location of existing administrative boundaries, which do not reflect the full spatial coverage of economic centres such as Cambridge, Northampton and Bedford). Huntingdonshire is experiencing inward migration from South Cambridgeshire and Hertfordshire due to housing pressures in those areas, in turn leading to some existing residents moving northwards to Peterborough, Fenland and South Kesteven as house prices have increased. Over the long term, this pattern of growth is unlikely to be sustainable for the economy, the environment or for communities in the Arc.

1.22 We can progress towards a better future by planning better for growth and seeking to provide for future needs before they bite, delivering the right infrastructure in the right places at the right times.

## **The need for a government-led approach to strategic planning**

1.23 Addressing these issues requires coordinated action across the Arc, and some coordination is already happening. Unitarisation of local councils in Buckinghamshire and Northamptonshire (building on existing joint planning arrangements in place in the latter) will support more strategic planning in those areas, as will the Joint Strategic Spatial Plan in development in Oxfordshire, and the non-statutory Spatial Framework in Cambridgeshire and Peterborough. Alongside this, the government is investing in the new East West Rail link to connect Oxford and Cambridge and providing over £400 million of Housing Infrastructure Fund investment to support delivery of housing on strategic sites. The Government has also agreed city deals with Oxford and Cambridge – an ambitious growth deal with Oxfordshire as they take forward a joint plan for the county, and a devolution deal with the Cambridgeshire and Peterborough Combined Authority. We have also made a commitment to



examine the case for development corporations, linked to the new transport hubs around East West Rail stations. But action is needed across the wider area on strategic planning, environmental, economic development and infrastructure issues.

1.24 A coordinated approach is difficult because the Arc comprises: 23 local planning authorities; a mayoral combined authority, eight transport planning authorities, the area's Local Enterprise Partnerships (which have responsibility for economic development), and England's Economic Heartland – the sub-national transport body that covers a slightly wider area than the Arc. There is also no single institution with the necessary competence and authority to lead a coordinated approach. This means that planning at the local level for homes, business space, infrastructure and the environment is not integrated, and is unable to take an Arc-wide view. If we want a better future, we need to plan for growth by thinking about the provision of infrastructure, housing, the environment and the needs of businesses and universities at the same time. We cannot continue to plan for transport, the environment and housing separately, or to think of economic development as separate from housing provision and commercial development.

<https://www.gov.uk/government/publications/planning-for-sustainable-growth-in-the-oxford-cambridge-arc-spatial-framework/planning-for-sustainable-growth-in-the-oxford-cambridge-arc-an-introduction-to-the-spatial-framework>

Below is a link to a tender invitation from MHCLG to provide an engagement strategy for settlements (OxCam Arc) – to begin on 24 March 2021.

<https://bidstats.uk/tenders/2021/W05/744358353>

As a key stakeholder, Cambourne Town Council (CTC) is keen to be involved at the earliest opportunity and has found it difficult to find any meaningful detail around the substance of the Corporations.

As our MP, I'm sure you will be better informed and CTC would welcome you sharing your knowledge with us on this matter.

Regards



Joe O'Dwyer – Chair of Cambourne Town Council

*Please address any reply to **John Vickery Clerk to the Town Council, Town Office, The Hub, Cambourne Community Centre, High Street, Cambourne, Cambridge. CB23 6GW.**  
Tel 01954 714403 E-Mail [clerk@cambourneparishcouncil.gov.uk](mailto:clerk@cambourneparishcouncil.gov.uk)*



# CAMBOURNE TOWN COUNCIL

District of South Cambridgeshire

Town Chairman Cllr J O'Dwyer  
Town Clerk John Vickery

16<sup>th</sup> March 2021

Anthony Browne MP  
Broadway House,  
149-151 St Neots Road,  
Hardwick  
CB23 7QJ

Dear Anthony,

Information about 'The OxCam Arc' refers to the establishment of four Development Corporations, one of which is proposed for Cambourne. Below are some excerpts from Government documents citing the Development Corporations.

(Extract from, Budget 2020 – Policy Paper- Updated 12 March 2020)

## 2.20 The OxCam Arc

The government has designated the corridor of land connecting Oxford, Milton Keynes, Bedford and Cambridge (the OxCam Arc) as a key economic priority. Earlier this year, the government announced the East West Rail Company's preferred route for the new line between Bedford and Cambridge. The government will also, subject to planning consents, build a new rail station at Cambridge South, improving connectivity to the world-leading research facilities of the Cambridge Biomedical Campus – the largest cluster of medical and life sciences research in Europe.

The Budget announces plans to develop, with local partners, a long-term Spatial Framework to support strategic planning in the OxCam Arc. This will support the area's future economic success and the delivery of the new homes required by this growth up to 2050 and beyond. The government is also going to examine and **develop the case for up to four new Development Corporations in the OxCam Arc at Bedford, St Neots/Sandy, Cambourne and Cambridge**, which includes plans to explore the case for a New Town at Cambridge, to accelerate new housing and infrastructure development.

<https://www.gov.uk/government/publications/budget-2020-documents/budget-2020>



(Extracts from, Planning for sustainable growth in the Oxford-Cambridge Arc: an introduction to the spatial framework 2020 – Policy Paper- 18 February 2021)

**1.20 East-west connectivity is poor.** Cranfield University is 7 miles from Milton Keynes but getting there by public transport involves a 45-minute bus journey. Cambridge is further away – 45 miles – and can take nearly 3 hours by a patchwork of buses and trains. This is driving up car dependency, which in turn is causing [high and increasing congestion](#). The East West Rail scheme will significantly improve east-west rail connectivity, but more needs to be done to promote sustainable transport, raise first and last mile connectivity around transport hubs, and better connect communities, employers, employees, businesses, cultural attractions, nature and universities, including through public transport, cycling and walking – making these the first choice for journeys.

**1.21 Housing affordability is poor.** The supply of new homes in the Arc's main centres has not kept up with demand – in Cambridge, the affordability ratio has risen to 12.76, in Oxford to 11.45 in 20 years, and in Chiltern and South Bucks to 17.62 and 15.56 respectively (the England average is 7.83) (ONS, 2019. Table 5C. Ratio of median house price to median gross annual workplace-based earnings by LAD). This has put home ownership out of reach for many. The wider economic effect of this is to make it harder for businesses to attract the skilled workers they need, to locate in the most productive locations, and is forcing longer and more polluting journeys as people travel longer distances to get to work. Population growth has been highest in areas of comparative housing affordability – Corby (30% since 2000), Milton Keynes (28%) and Peterborough (27.5%) (this is also explained by the location of existing administrative boundaries, which do not reflect the full spatial coverage of economic centres such as Cambridge, Northampton and Bedford). Huntingdonshire is experiencing inward migration from South Cambridgeshire and Hertfordshire due to housing pressures in those areas, in turn leading to some existing residents moving northwards to Peterborough, Fenland and South Kesteven as house prices have increased. Over the long term, this pattern of growth is unlikely to be sustainable for the economy, the environment or for communities in the Arc.

1.22 We can progress towards a better future by planning better for growth and seeking to provide for future needs before they bite, delivering the right infrastructure in the right places at the right times.

## **The need for a government-led approach to strategic planning**

1.23 Addressing these issues requires coordinated action across the Arc, and some coordination is already happening. Unitarisation of local councils in Buckinghamshire and Northamptonshire (building on existing joint planning arrangements in place in the latter) will support more strategic planning in those areas, as will the Joint Strategic Spatial Plan in development in Oxfordshire, and the non-statutory Spatial Framework in Cambridgeshire and Peterborough. Alongside this, the government is investing in the new East West Rail link to connect Oxford and Cambridge and providing over £400 million of Housing Infrastructure Fund investment to support delivery of housing on strategic sites. The Government has also agreed city deals with Oxford and Cambridge – an ambitious growth deal with Oxfordshire as they take forward a joint plan for the county, and a devolution deal with the Cambridgeshire and Peterborough Combined Authority. We have also made a commitment to

examine the case for development corporations, linked to the new transport hubs around East West Rail stations. But action is needed across the wider area on strategic planning, environmental, economic development and infrastructure issues.

1.24 A coordinated approach is difficult because the Arc comprises: 23 local planning authorities; a mayoral combined authority, eight transport planning authorities, the area's Local Enterprise Partnerships (which have responsibility for economic development), and England's Economic Heartland – the sub-national transport body that covers a slightly wider area than the Arc. There is also no single institution with the necessary competence and authority to lead a coordinated approach. This means that planning at the local level for homes, business space, infrastructure and the environment is not integrated, and is unable to take an Arc-wide view. If we want a better future, we need to plan for growth by thinking about the provision of infrastructure, housing, the environment and the needs of businesses and universities at the same time. We cannot continue to plan for transport, the environment and housing separately, or to think of economic development as separate from housing provision and commercial development.

<https://www.gov.uk/government/publications/planning-for-sustainable-growth-in-the-oxford-cambridge-arc-spatial-framework/planning-for-sustainable-growth-in-the-oxford-cambridge-arc-an-introduction-to-the-spatial-framework>

Below is a link to a tender invitation from MHCLG to provide an engagement strategy for settlements (OxCam Arc) – to begin on 24 March 2021.

<https://bidstats.uk/tenders/2021/W05/744358353>

As a key stakeholder, Cambourne Town Council (CTC) is keen to be involved at the earliest opportunity and has found it difficult to find any meaningful detail around the substance of the Corporations.

As our MP, I'm sure you will be better informed and CTC would welcome you sharing your knowledge with us on this matter.

Regards



Joe O'Dwyer – Chair of Cambourne Town Council

Please address any reply to **John Vickery Clerk to the Town Council, Town Office, The Hub, Cambourne Community Centre, High Street, Cambourne, Cambridge. CB23 6GW.**  
Tel 01954 714403 E-Mail [clerk@cambourneparishcouncil.gov.uk](mailto:clerk@cambourneparishcouncil.gov.uk)



[clerk@cambourneparishcouncil.gov.uk](mailto:clerk@cambourneparishcouncil.gov.uk)

**From:** Roy Suzanne <Suzanne.Roy@scambs.gov.uk>  
**Sent:** 09 March 2021 19:17  
**Subject:** Thank You

## Thank you

Dear volunteer coordinators and parish councillors



One year ago today, we had already learned the new phrase 'social distancing' and about washing our hands for long enough to sing 'Happy Birthday' twice. We were seeing people really worry about whether there would be enough food, which led to panic-buying and the knock on effect of shortages on the shelves. Local events were being cancelled. And at the Council we were beginning to work on pulling together our first Covid-19 Community Pack. District and Parish Councillors were already working to coordinate local efforts, linking up with existing community



groups and new groups of volunteers who were mobilising to offer support in your communities. Although the situation was developing rapidly, we wanted to try to support groups as you supported residents.

In the UK, three people had by now lost their lives to Covid-19.

In just one week's time, it will be a year since the Prime Minister first urged everyone who could do so to work from home. And in two weeks' time, we will pass the milestone of one year since the first lockdown. At that point, I don't think any of us expected that the restrictions would last, on and off, for as long as this.

It feels sombre to mark these anniversaries of Covid-19. People with birthdays in the spring (like mine in early April) will be planning for their second lockdown birthday. This weekend, some families will be marking a second Mother's Day from a distance. This follows many other special days and day-to-day activities that have also been missed. For anyone who has lost a loved one this year, I cannot imagine how much more difficult this year has been for you. We know that however hopeful we are about the coming months, it can never make up for the loss that we have experienced this year.

But I really hope that you will all take some comfort in the knowledge that marking a year of Covid also marks one year that you have all been working harder than ever to provide selfless support to your communities. We've seen such wonderful stories about people from all walks of life reaching out to offer support to neighbours. We can't thank you enough for all those trips to pharmacies, deliveries of shopping and hot food, phone calls to people who've been on their own, online events you've run to keep people connected, and much more. We really wouldn't have weathered the storm without you.

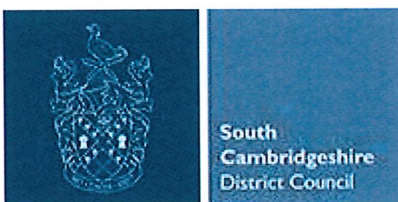
And although the storm's certainly not yet over (we need to stick to the restrictions to get case rates as low as possible before restrictions are eased), there is now, thanks to the vaccine rollout and schools returning this week, real hope for a brighter summer ahead.

Thank you all for everything you've done and continue to do to support your communities. Once it's safe to do so, I hope that we can properly meet you and thank you for all of your efforts.

Best wishes,

Cllr Bridget Smith

Leader, South Cambridgeshire District Council (Liberal Democrat)



South Cambridgeshire Hall | Cambourne Business Park | Cambourne | Cambridge CB23 6EA  
E: [cldr.bridgesmith@scambs.gov.uk](mailto:cldr.bridgesmith@scambs.gov.uk)  
[facebook.com/south-cambridgeshire](https://www.facebook.com/south-cambridgeshire) | [twitter.com/SouthCambs](https://twitter.com/SouthCambs)

## Disclaimer

The information contained in this communication from the sender is confidential. It is intended solely for use by the recipient and others authorized to receive it. If you are not the recipient, you are hereby notified that any disclosure, copying, distribution or taking action in relation of the contents of this information is strictly prohibited and may be unlawful.

This email has been scanned for viruses and malware, and may have been automatically archived

[clerk@cambourneparishcouncil.gov.uk](mailto:clerk@cambourneparishcouncil.gov.uk)

---

**From:** Des Parish Council <des.obrien@bourn.org.uk>  
**Sent:** 10 March 2021 14:51  
**To:** Huntington Mike  
**Cc:** Les Rolfe; parish Clerk; john vickery  
**Subject:** S106 contribution to Broadway cycle way and footpath

Hi Mike

You may remember that on a number of occasions during our past discussions I mentioned that Bourn Parish Council were interested in exploring the option of a developer S106 contribution for the provision of a cycleway and footpath from the western access to the airfield down the Broadway to Bourn village.

The idea sits comfortably with the development's aspirations to be sustainable and will not only serve the airfield development but will also serve Upper Cambourne as they will have cycle access to the Broadway alongside the proposed busway. I discussed recently the concept for a Broadway cycleway and dedicated footpath with John Vickery, the Cambourne Town Clerk, and he was very confident that Cambourne Town Council would be supportive.

I know one of the criteria for S106 funding is that the infrastructure, or service, benefit the residents of the new development. I'm sure you'll agree that encouraging cycling and walking on the Broadway would be very beneficial to airfield residents but would also help residents make sustainable choices when looking to travel south from the western access.

How can we help make this happen?

Best wishes  
Des



**Des O'Brien, Chairman**  
Bourn Parish Council