

CAMBOURNE TOWN COUNCIL
District of South Cambridgeshire

OXCAM ARC

Council Meeting 7th September 2021



The Ox-Cam Arc Spatial Framework Consultation

*Have your say on the future of your area.
Make sure the Ox-Cam Arc Spatial Framework reflects your experiences of
working and living in Cambridgeshire and Peterborough.*

[Complete the survey here](#)

**Dr Nik Johnson, Mayor of
Cambridgeshire and Peterborough:**

"I very much welcome the government's announcement of a 12-week public consultation on the future of the Ox-Cambs Arc Spatial Framework. The Combined Authority Leaders and I urge residents to take this as an opportunity to tell the government what vision and priorities they have for Cambridgeshire and Peterborough so we can create a better place for all Arc residents from our market towns and cities, from the Fens, to Peterborough and Cambridge. We have an opportunity to shape a strategy focused on our vision of a green Arc, a



skilled Arc and to create a world class place to live, work and learn.”

What is the Ox-Cam Arc?

The Oxford-Cambridge Arc (the Arc) is a globally significant area that is formed of five ceremonial counties: Oxfordshire, Bedfordshire, Buckinghamshire, Northamptonshire and Cambridgeshire. This forms an ‘Arc’, which provides a place to live for approximately 3.7 million residents and supports over 2 million jobs; adding over £110 billion in economic output every year it is home to one of the fastest growing economies in England.

It is a unique place, home to cutting-edge research, globally renowned science and technology clusters, and some of the most productive towns and cities in the country. It contains a vibrant natural environment, world-leading universities, and a rich cultural heritage.

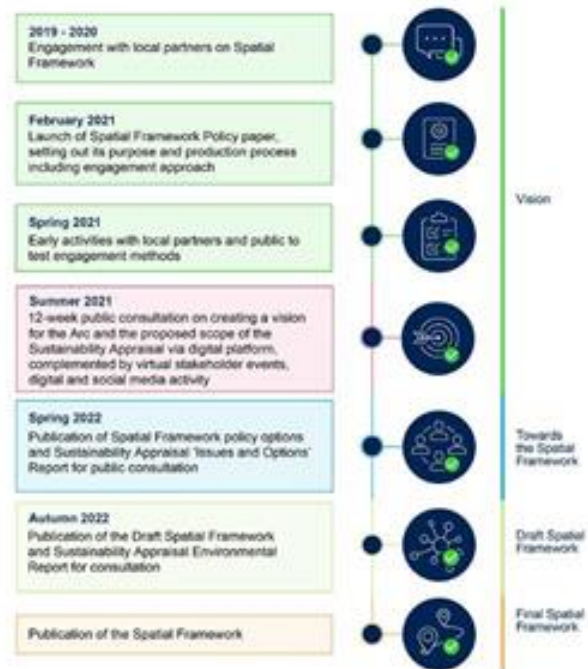
The ambition for the Arc is to build a better economic, social and environmental future for the cities, towns and rural communities across the area. With high-quality, well-connected and sustainable communities making the Arc an even more beautiful place to live, work and visit.

[Watch video here](#)

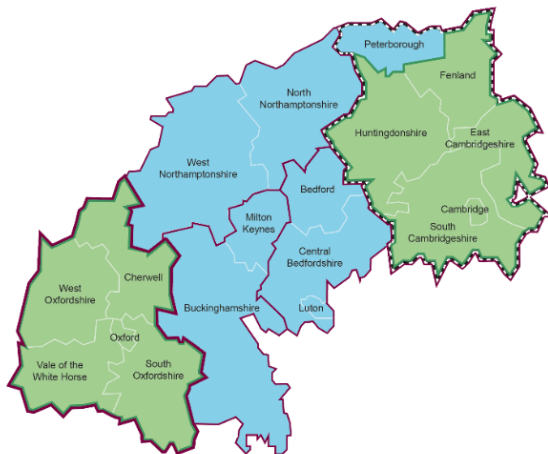
What is the Spatial Framework?

The Spatial Framework will be a long-term strategic plan for the area to 2050 and beyond, which will set national planning policy and national transport policy. At a strategic scale, it will coordinate and focus investment in the area and shape future local planning decisions on: how land is used; how the environment is protected and enhanced; where and what type of new development happens; and what infrastructure is provided.

It will guide local planning and investment decisions under four 'pillars': the environment; the economy; connectivity and infrastructure; and place-making. The Spatial Framework will provide us with an opportunity to plan for growth in a way that: brings benefits to existing communities by making the area a better place to live and work; leaves a long-term legacy by protecting and enhancing the Arc's built and natural environment and beautiful places; and supports contributions to the national effort on combatting and building resilience to climate change.



What does a vision for the Spatial Framework mean?



For the Spatial Framework to work best, we think it is important that its content is informed and shaped by those who live, work and have an interest in the area.

The purpose of a vision is to bring the policy outcomes to life and illustrate the kind of place and future that together the policies are aiming to achieve. The vision will act as the core from which policies are developed and framed. Good visions are simple and easy to understand in a way that allows everyone to visualise the future of that place.

We think the vision for the Spatial Framework should be ambitious, aspirational, and be unique to the Arc and reflect its people, places and potential. We think it's important to also think big in terms of potential opportunities for transformation. The world will be a very different place by 2050, and we want to ensure that the vision for the Arc and the Spatial Framework helps make the area an even better place to live, work, travel in and enjoy for existing and future communities alike. To help build on our ambitions and develop the vision we are asking for your views in our public consultation.

Who is going to develop the Spatial Framework?

Working closely with local partners, including Local Authorities and Local Enterprise Partnerships, the Spatial Framework will be developed by the government across a number of departments, led by the Ministry of Housing, Communities and Local Government (MHCLG).

How can Local Residents and Stakeholders have their say?

In February the government committed, with the support of local partners, to conduct wide and meaningful engagement to give as many people as possible the opportunity to influence how the Spatial Framework is designed. To achieve this, on the Spatial Framework there are three planned phases of public consultation over a two-year period.

The first opportunity for public consultation to shape the Spatial Framework has just been launched, with two further public consultations planned. A newly launched digital platform will provide anyone from the Arc, or interested in the Arc, with the opportunity to respond with their views on the approach to the vision.

Alongside the platform, the government, supported [by ourselves] and other local partners, will be hosting a series of workshops for under-represented groups and representative bodies.

[Complete the survey here](#)

What will you do with the responses to the vision consultation? Will they be properly taken into account?

All comments received to this consultation will be properly considered, and will, alongside other considerations, help to create the Spatial Framework's vision for the Arc to 2050.

The government will publish a summary of comments received and their response as part of this consultation, so you can see how your views helped to shape the vision.

[Read more about the Spatial Framework here](#)