

CAMBOURNE TOWN COUNCIL









District of South Cambridgeshire

Council Meeting 6th September 2022

Correspondence

	FROM	SUBJECT
11.1	East West Rail Team	Confirmed: Haslingfield drop-in event, Friday 9 September
11.2	The Library Presents	The Library Presents Autumn 2022 season
11.3	South Cambs District Council	Free entry to Wimpole for community groups
11.4	Cambridge Open Art Exhibition	Cambridge Open Art Exhibition 2022
11.5	Cambridgeshire Acre	Introducing Warm Hubs in East Cambridgeshire and South Cambridgeshire
11.6	Cambridgeshire County Council	Local volunteers needed for school appeals
11.7	Fens Reservoir Project Team	REMINDER: Anglian Water webinar invitation
11.8	Cambourne Resident	Monkfield Care & Learning Centre
11.9	Town Clerk	Great Cambourne Play Area
11.10	East West Rail	EWR Co Cambourne & Surrounding Areas Local Representatives Group – register and fill in the meeting poll #3

The below schedule is a summary of correspondence circulated by the Town Clerk to Councillors since the last meeting by email

FROM	SUBJECT
Anthony Browne MP	Who do you want as the next Prime Minister?
CAPALC	 For Circulation   July Bulletin 
Anthony Browne MP	July News from Anthony Browne MP
Cambridgeshire County Council	Looking for volunteers....
CAPALC	 For Circulation   August Bulletin 
Anthony Browne MP	Join my campaign for new specialist hospitals

Confirmed: Haslingfield drop-in event, Friday 9 September

Good morning,

I recently wrote letting you know that following discussion with local representatives and emails from residents, the Haslingfield drop-in event which had to be postponed due to the extraordinary temperatures would be rescheduled for September.

I am now pleased to be able to confirm that the Community Drop-in Event will be held in Haslingfield Village Hall on **Friday 9 September 2022 from 2pm until 8pm**.

As with our previous drop-ins, the event is designed to give local residents, businesses and stakeholders an opportunity to understand the project development process, anticipated timescales, and speak face-to-face with members of our team.

While we won't have any new information to share at this event – as we are still reviewing the responses received during the 2021 consultation and considering how the feedback is used to inform plans for the railway – they will provide an opportunity for us to engage with people outside the formal consultation process.

We would welcome your involvement in promoting these events to your community. We want to make sure as many people as possible in your community have an opportunity to come and talk to us. More information can be found [here](#).

We look forward to seeing you there.

Yours sincerely

Hannah Staunton
Head of External Affairs | East West Railway Company

The Library Presents Autumn 2022 season

Hello

The Library Presents are delighted to announce the launch of their new season of exciting arts events which will run from October to December 2022. The season will bring workshops and performances to locations across Cambridgeshire.

Please find attached a digital copy of the season brochure. Full details of the program, along with booking information can also be found at www.library.live/the-library-presents

If you would like to receive a hard copy of the [brochure](#) please email thelibrarypresents@cambridgeshire.gov.uk.

Best regards,

The Library Presents Team

Free entry to Wimpole for community groups

From: CLP <CLP@scams.gov.uk>

Sent: 26 August 2022 12:22

Subject: Free entry to Wimpole for community groups

Hi

I hope my email finds you well!

I am writing to you about an exciting new initiative recently launched by the Wimpole Estate, a National Trust property in Cambridgeshire. They are offering local community groups free admission to the estate and its facilities. This is a fantastic opportunity to encourage creativity and connection with nature.

Polly Ingham-Watts, the General Manager of Wimpole Hall, is passionate that everyone can enjoy all that Wimpole has to offer and recognises that National Trust membership or the standard admission charges are not accessible to everyone. Each pass issued under this initiative would provide free access for up to 16 people.

Passes may be used on any day except on bank holidays and the weekends preceding bank holidays. Those intending to use the pass are asked to email wimpolehall@nationaltrust.org.uk or call the estate before coming, stating the name of your group, the number of people and approximate time of arrival. Where practical community groups are encouraged to visit during weekdays as Wimpole can get very busy at weekends when there may be less scope to cater for additional needs.

If you think that members of groups would be interested in receiving free admission passes, please return the attached form via email to wimpoleforeveryone@nationaltrust.org.uk.

Wimpole Estate consists of a historic mansion, beautiful gardens, a show farm and extensive parkland, there is plenty of free parking for cars and minibuses, a visitor reception centre, electric buggies to assist people with limited mobility, as well as cafes and shops. For more information visit <https://www.nationaltrust.org.uk/wimpole-estate>.

Kind regards,

Emma Dyer | Development Officer (Community-Led Plans), Communities team

Wimpole for Everyone Community Group Admission Pass

Application Form

What is Wimpole for Everyone Community Group Admission Pass?

We aim to make Wimpole a place that is accessible for everyone. This pass gives free access to eligible community groups to Wimpole.

Please complete the application form below (completing all white boxes) and return this along with a copy of your Group Constitution or Memorandum of Association if you have one, or other suitable evidence of group governance and mission statement. Please email this to wimpoleforeveryone@nationaltrust.org.uk

For your information: This pass is in its trial phase and we would appreciate any feedback in order to develop the initiative further. Please send your thoughts to wimpoleforeveryone@nationaltrust.org.uk

Group Details		
Name:		
Brief description of the group:		
Are you a registered charity? (please delete as appropriate)	Yes / No	
I have attached a copy of our: (please delete as appropriate)	a) Group constitution b) Memorandum of association c) Other suitable evidence of group governance and mission statement	
Contacts:		
Groups registered address:		
Person 1:	Name:	
	Tel:	
	Email:	
Person 2:	Name:	
	Tel:	
	Email:	

Your use of the Community Group Admission Pass	
This will give us an insight to the potential for the pass and help us support you to make the most of your access.	
Total number of passes required. Passes are single-use and must be handed in to our visitor Welcome Team on arrival. (You can request additional passes at a later date).	
Please indicate number of people that might visit Wimpole with each pass: NB no more than 16 unless by prior agreement.	
Which areas do you think you might visit at Wimpole, utilising the pass? Delete as appropriate.	Farm Yes/no Gardens Yes/no Shop/Second-hand bookshop Yes/no Restaurant/Café Yes/no Mansion Yes/no Parkland Yes/no
What benefits do you anticipate there might be for your group?	
We hope to build deeper connections between Wimpole and our local community. The question below will help us understand and evaluate how our audience feel about Wimpole and how this may change over time.	
How connected do you feel to Wimpole? (please delete as appropriate)	1. I have no connection to Wimpole 2. I know a little about Wimpole 3. I am involved with Wimpole 4. I feel part of the Wimpole Community 5. I can contribute to the running of Wimpole 6. I feel empowered to share and challenge ideas at Wimpole
What might Wimpole do to better support your members when they visit?	
Do you have any questions or concerns which we can help with in advance?"	

Please now submit your application form to wimpoleforeveryone@nationaltrust.org.uk Don't forget to attach a copy of your Group Constitution or Memorandum of Association if you have one, or other suitable evidence of group governance and mission statement. We promise to store this information securely.

Cambridge Open Art Exhibition 2022

From: Cambridge Open Art Exhibition Info <info@coax.org.uk>
Sent: 25 August 2022 17:55
To: entries@coax.org.uk
Subject: Cambridge Open Art Exhibition 2022

Good afternoon,

We are delighted to announce The Cambridge Open Art Exhibition is returning to Swavesey Village College on 15th & 16th October 2022 after a 3 year gap.

We are a non-selective commission free exhibition featuring artworks from over 70 local artists. We run a cafe and art activities (Saturday) for children. Entry is free for all visitors and ample free parking.

We are run entirely by volunteers and have a very limited budget for advertising so would like to ask if you could display the attached poster on your parish noticeboard to increase awareness of the Exhibition weekend within your village.

If you would like a printed version, please confirm the address where we should send the poster nearer the time.

Also if this is something you would be able to advertise in your parish magazine, please could you forward on our behalf.

Information about us can be found at www.coax.org.uk

Thank you for your support.

With kind regards,

Kathryn

Cambridge

OPEN ART

Exhibition

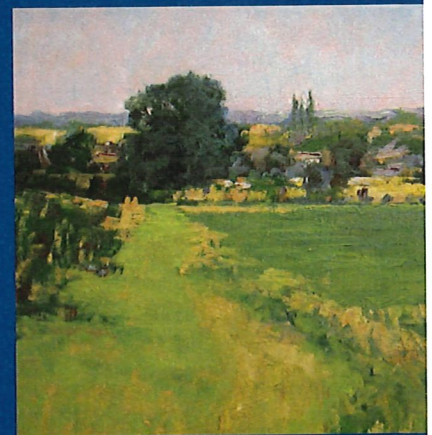
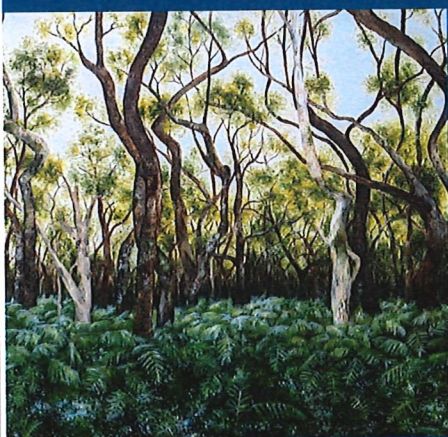
Saturday 15th October 2022 • 10am to 5pm

Sunday 16th October 2022 • 10am to 4pm

Swavesey Village College,
Gibraltar Lane, CB24 4RS

Free entry and parking, Café
Children's Activities (Sat)

2022





Introducing Warm Hubs and how you can help

Dear John

A 'Warm Hub' is a warm and safe place where local people can expect a friendly and inclusive welcome. People can come along on their own, or with a friend, and talk to others over a hot drink or maybe a hot meal. They can get practical tips and advice on saving energy costs and keeping safe and warm at home. They will also be helped to access specialist advice and support on things such as cost-of-living grants or debt advice. Warm Hubs can run from publicly accessible community buildings, such as community centres, village halls, churches and their halls, older peoples' day centres, youth centres and community libraries.

Cambridgeshire ACRE wishes to work alongside parish councils, village hall committees, church communities, local charities and other community groups to establish a network of Warm Hubs with the target of opening the doors of the first ones in October as the weather starts to get colder.

We expect Warm Hubs to reflect the needs of each community; so some might evolve out of groups that already meet, for example, you may already be holding a community café or coffee morning or breakfast club; some might be arranged around other activities such as a play group or older people's / friendship club and others might be completely new in their set-up as a Warm Hub.

Each Warm Hub will be provided with set-up support including an assessment of the building to check for its energy efficiency and warmth; promotional materials for your community to identify the Warm Hub and its value; a volunteer training programme delivered individually to each Hub to ensure it is effectively established and reflects community needs; and grant funding to allow for building rental, heating and any additional specialist equipment that might be needed to make your Warm Hub successful. Warm Hubs that go through this process with us will be affiliated to a network across South and East Cambridgeshire.

Cambridgeshire ACRE will also establish an associated 'Warm Hubs Advice and Support Programme' providing connection to support services provided by local authorities, health services and charities that can help support your Hub.

Our ask and our offer...

We ask you to consider the needs of your own community this wintertime and if you feel a Warm Hub might be an option, we invite you to [complete this short expression of interest form](#). This will allow our Warm Hub Co-ordinator to get in touch with you to discuss the needs in your community and the possibility of starting a Warm Hub this wintertime.

We would also like to invite you to join us for an online event where we will present more details on how Warm Hubs can become established; the support you will receive by being part of this affiliated programme; and answer any questions you might have at this stage. Please register to attend [here](#).

The Warm Hubs in Winter project is being delivered in partnership by Cambridgeshire ACRE, the Cambridgeshire & Peterborough Integrated Care System's South Place Partnership, South Cambridgeshire District Council and East Cambridgeshire District Council.

With best wishes
Kirsten Bennett

Chief Executive, Cambridgeshire ACRE



Local volunteers needed for school appeals

From: Zoe Shanahan <Zoe.Shanahan@cambridgeshire.gov.uk>

Sent: 18 August 2022 14:03

Subject: Local volunteers needed for school appeals

We are trying to reach out into the local community to contact people who may be interested in a volunteer role with Cambridgeshire County Council and Peterborough City Council. Would you be able to help please?

As a brief summary, I arrange independent panels to review a schools decision to refuse a place that has been requested by a parent/carer. The Panel have the authority to make a legally binding decision to either overturn or confirm the schools initial refusal of a school place.

We are required to provide 3 panel members for each appeal with a combination of volunteer Lay and Education Experienced people.

We would so appreciate any help that you could offer to recruit panel members please for this vital role both for parents and schools.

Please could you forward the attached details to those you feel may be interested and can you advise of any other ways that we could contact your community? Is there a local newsletter where we could include an article or you could mention the role please?

I would so appreciate any feedback with suggestions of ways to contact the residents of your community.

Please feel free to contact me with any suggestions or questions on the contact details below.

Kindest regards

Zoe Shanahan
Education Appeals Panel Officer

VOLUNTEERS NEEDED!

Are you interested in Primary & Secondary School Education?
Do you have excellent listening skills?
Are you able to make balanced decisions?

Parents/carers have the right to appeal if their child is not offered a place in their preferred school.

We coordinate an Independent Panel to review a school's decision to refuse a school place and determine whether one should be offered, or not.

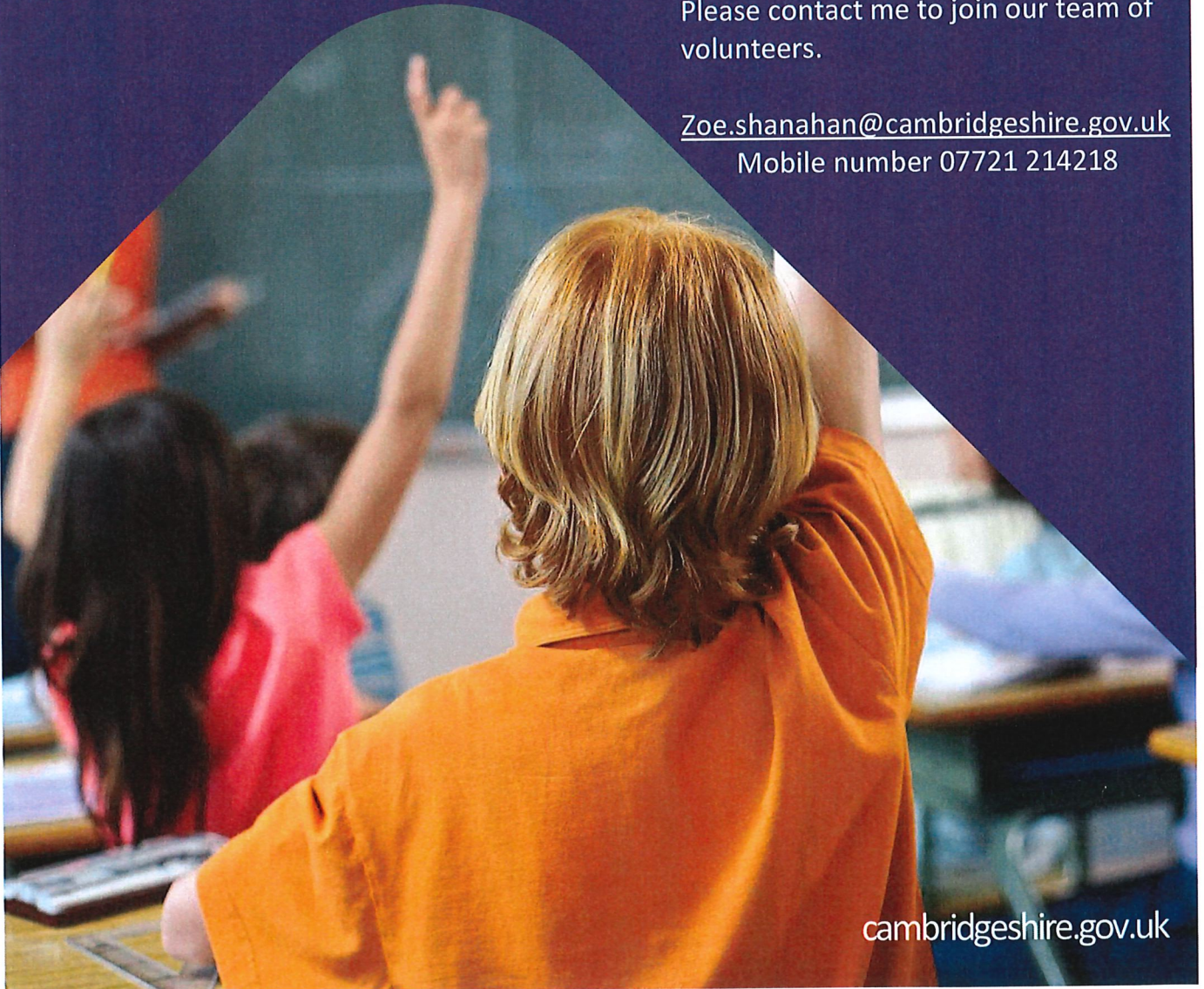
We **urgently** need volunteers to be part of this professional panel – **please APPLY TODAY!**

Full training will be given.

Please contact me to join our team of volunteers.

Zoe.shanahan@cambridgeshire.gov.uk

Mobile number 07721 214218



Volunteer School Appeals Panel Member

- Are you interested in Primary and Secondary School Education and want to be involved?
- Do you have excellent listening skills?
- Are you able to put people at ease?
- Are you able to make balanced decisions?
- Would you be interested in being part of an important, impartial service provided to parents and schools?

If you have answered yes to any of the above, please consider applying to be become a Volunteer School Appeals Panel Member

Why be a panel member?

For some people the work is helpful for their career, providing them with relevant work experience.

For others, it is rewarding in itself to give people the chance to state their case. Appellants often become clearer about the options open to them during a hearing and the reasons why a place was not offered at a preferred school.

What is the role?

All parents or carers have the right to make an appeal to an independent appeal panel if their child is not offered a place at their preferred school.

The role of the panel is to decide whether a child who has been refused a place by an admission authority, should be given a place. All parties involved must be afforded an appeal hearing that is transparent, accessible, independent and impartial.

The appeal panel is independent of the local authority and their decisions are binding on all parties, unless overturned by the courts.

An Appeals Panel is made up of 3 trained panel members:

- Lay members – those without personal experience in the management of a school or provision of education in any school (except as a school governor);
- Education experienced members – those who have experience in education, are acquainted with educational conditions or who are parents of registered pupils at school.

The Panel is supported by an independent Legal Clerk who advises the Panel on points of law and procedure and takes notes during the Hearing.

What will I be doing?

- You will be sitting on independent admission appeal panels
- Ensuring that parents feel they have had a fair and independent hearing, have been given every opportunity to put their case and have been taken seriously
- Volunteers must be able to listen to two sides of a case and weigh up evidence objectively and impartially.

To ensure impartiality, panel members must not be elected Members or employees of the County Council who work in education, or on the governing body of the school concerned with the appeal. However, they can be on the governing body of an unconnected school. They must also not be involved in the management or provision of education in any school.

What skills or experience do I need?

The following qualities will help you to undertake the work of the Panel:

- Ability to communicate effectively with a wide range of people
- Ability to read and assess information and identify key points
- Ability to listen to key information
- Ability to ask questions to obtain information and clarify points being made
- Ability to analyse information and use it to form opinions and conclusions
- Ability to obtain and weigh up evidence to reach a reasoned and evidence based decision
- Willingness to work as part of a team
- Willingness to take advice
- Willingness to develop your own skills

Equal Opportunities

- Ability to demonstrate awareness/understanding of equal opportunities
- Ability to consider people's behaviour, physical, social and welfare needs

Panel members will be expected to develop an understanding of:

- The admissions process and the guidance /legislation
- The role of the Legal Clerk

Will I receive training?

All volunteer Panel Members receive initial and annual refresher training. You will also be fully supported by the Appeals Service.

How much time do I need to give?

This can vary depending on the level of commitment you wish to give. While appeals are held throughout the year, the peak months are between April and July. The appeals are arranged for half a day or a full day.

Location of Hearings

Hearings are currently virtual using Microsoft TEAMS but this will be reviewed in September 2022.

More information

If you require further information or would like an informal to chat to discuss the above, please contact zoe.shanahan@cambridgeshire.gov.uk

REMINDER: Anglian Water webinar invitation

From: Fens Reservoir Project Team <info@fensreservoir.co.uk>
Sent: 23 August 2022 17:08
To: John Vickery <clerk@cambourneparishcouncil.gov.uk>
Subject: REMINDER: Anglian Water webinar invitation

Dear John Vickery

We hope that by now you've heard Anglian Water is developing proposals for two new reservoirs. One is proposed to be in the Fens and will see Anglian working together with Cambridge Water. The other will be located in Lincolnshire.

The proposed new reservoirs (which will be each be around the size of Grafham Water) will help to ensure water security for the region, while protecting the environment from the effects of climate change. They will capture water during winter when rainfall and river flows are at their highest, to provide water when needed. Construction of the new reservoirs could begin by 2030, with the expectation that they would start supplying water to customer taps by the mid to late 2030s.

We're hosting a webinar for councillors and parish councils at 6pm on 25 August to discuss the proposed reservoir projects.

You're welcome to join us to find out more about why the reservoirs are needed and the project progress to date. We won't be able to disclose the proposed locations of the reservoirs at this stage, that will happen as part of our public consultation. But we will discuss why the reservoirs are needed, the benefits they will bring and our plans for engaging the public in your area. There'll also be time for any questions you may have.

The project will be hosted on Zoom. You can join using the link below.

If you have any technical questions about the webinar, please let us know so that we can support your attendance.

We look forward to seeing you on Thursday.

Link to join webinar: <https://us06web.zoom.us/j/83917190901>

You can find more about our project on our website: <http://www.anglianwater.co.uk/new-reservoirs>

Kind regards

Adam Speed
Stakeholder Engagement Lead – Major Projects

Monkfield Care & Learning Centre

Email from resident to Cllr Mark Howell. The resident would like Councillors to be aware of the issue.

Dear Mark,

My name is Mrs ..., I have been a resident of Cambourne since 2010. I have a baby who is going to be 2 years old in August 2023, and I have contacted Monkfield Care & Learning Centre about securing a place for my daughter for a place at nursery for September 2023.

*Please see the emails below where they have informed me that the Monkfield Care & Learning Centre will cease to function as a nursery from September 2023.

Monkfield Care & Learning Centre has been taking in 2 years olds for at least 20 years now. I would like to know why now, have they decided to stop taking in 2-year-old children.

I have at least £1,000 worth of childcare vouchers saved up and now I find that I can't use them as the care& learning centre will not accommodate my soon to be 2 year old.

I feel that with the population increasing in Cambourne due to the developments of West Cambourne and Sunflower Nursery having a long waiting list, it's unfathomable to think why the Monkfield Care & Learning Centre will stop accommodating 2-year-olds.

I would like your advice on what I can do, (if I can do anything to help) as I would like my child to go to the Monkfield Care & Learning Centre, like her 2 sisters have in the past from the age of 2?

Kind Regards

*** Monkfield Park Primary School response:**

Good morning

Thank you for your email, The pre-school now only takes children from their 3rd birthday so ... would be able to start in September 2024.

I have attached the registration forms for your information

Many thanks

Monkfield Park Primary School

EWR Co Cambourne & Surrounding Areas Local Representatives Group

Hello,

We're contacting you regarding the Group's next meeting. We'd be grateful if you could fill in the meeting poll below by **4pm on Wednesday 14th September** to advise which of the provided dates work for you and, indicate how you will join the meeting.

Please fill in the date poll and register to attend the meeting #3 – [here](#).

To ensure that all voices can be heard, we would appreciate it if only one representative attends from your Council. Please note that the representative can change from meeting to meeting.

As requested by Group members, we plan to hold this meeting in a virtual format, allowing you to join virtually via Zoom or over the telephone.

Once the most popular date has been identified, we'll send a formal invitation. Details of how to join the meeting virtually will also be circulated on the day of the meeting.

In the meantime, you can find all the Group's relevant documents, including its Terms of Reference, and summary meeting notes and presentation slides from past meetings, on the Group's dedicated Community Hub site – [here](#).

If you have any other questions about the Group, please email localrepresentatives@eastwestrail.co.uk and for any wider questions about us or the project, please email contact@eastwestrail.co.uk.

Thank you again for being part of the EWR Co LRG for Cambourne & Surrounding Areas. We look forward to continuing to work with you.

Kind regards,

Nasreen
Strategic Stakeholder Manager
East West Railway Company